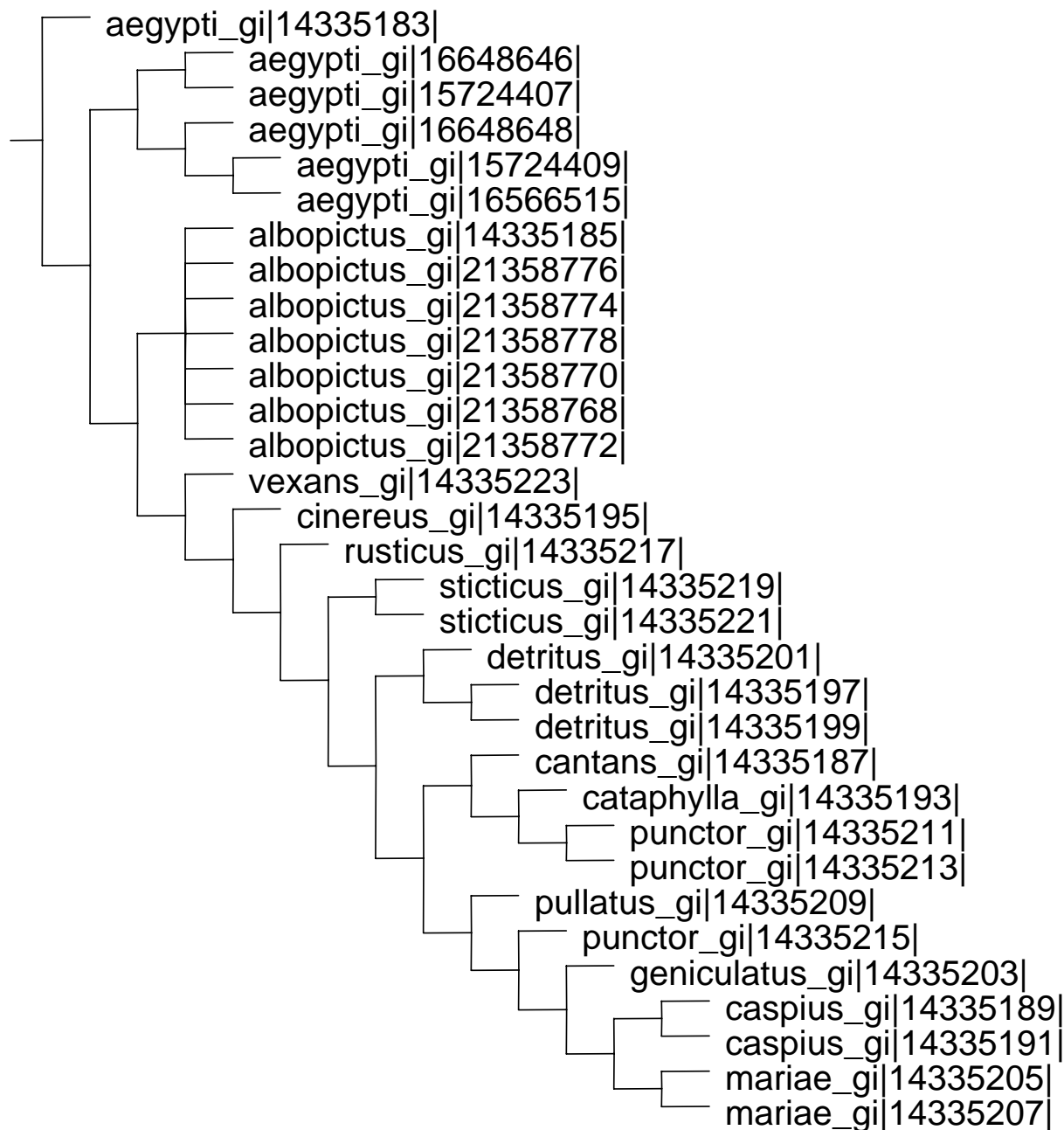


Aedes

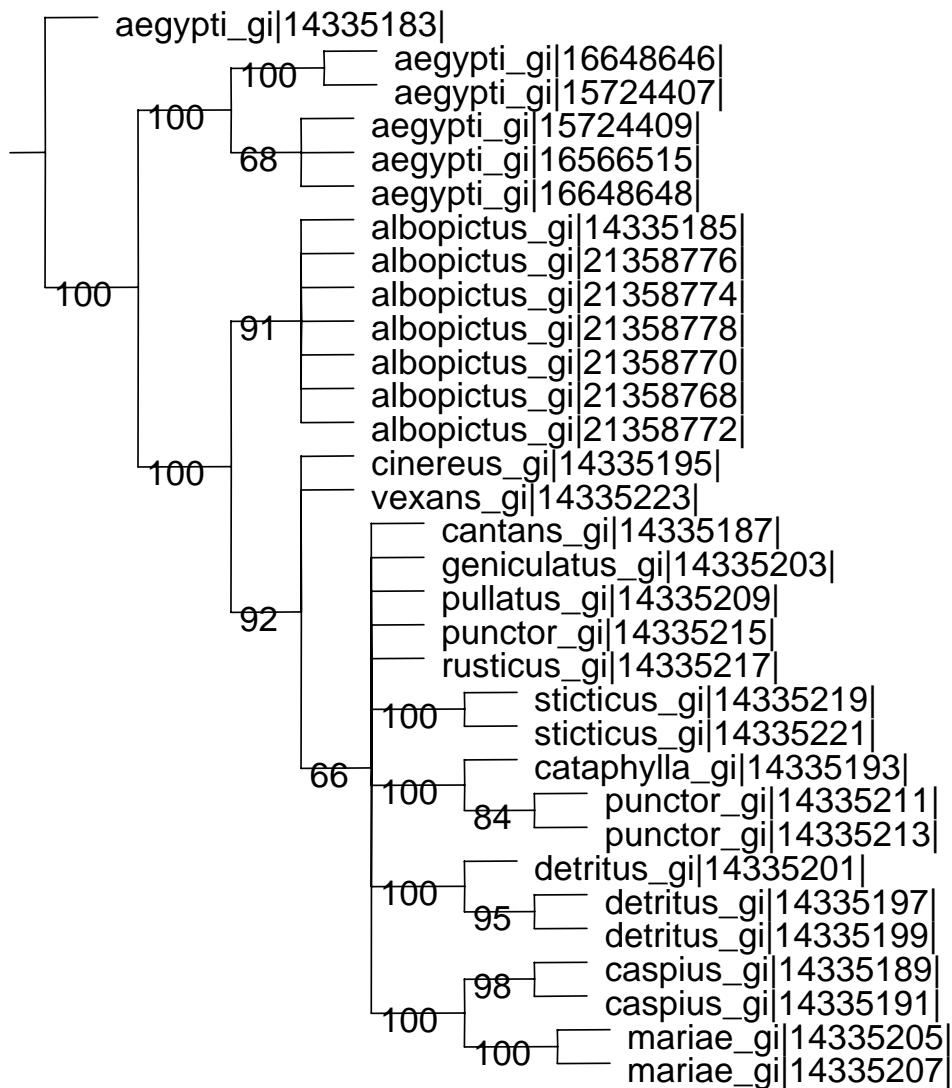
Strict consensus of 2 trees (0 taxa excluded)



Aedes

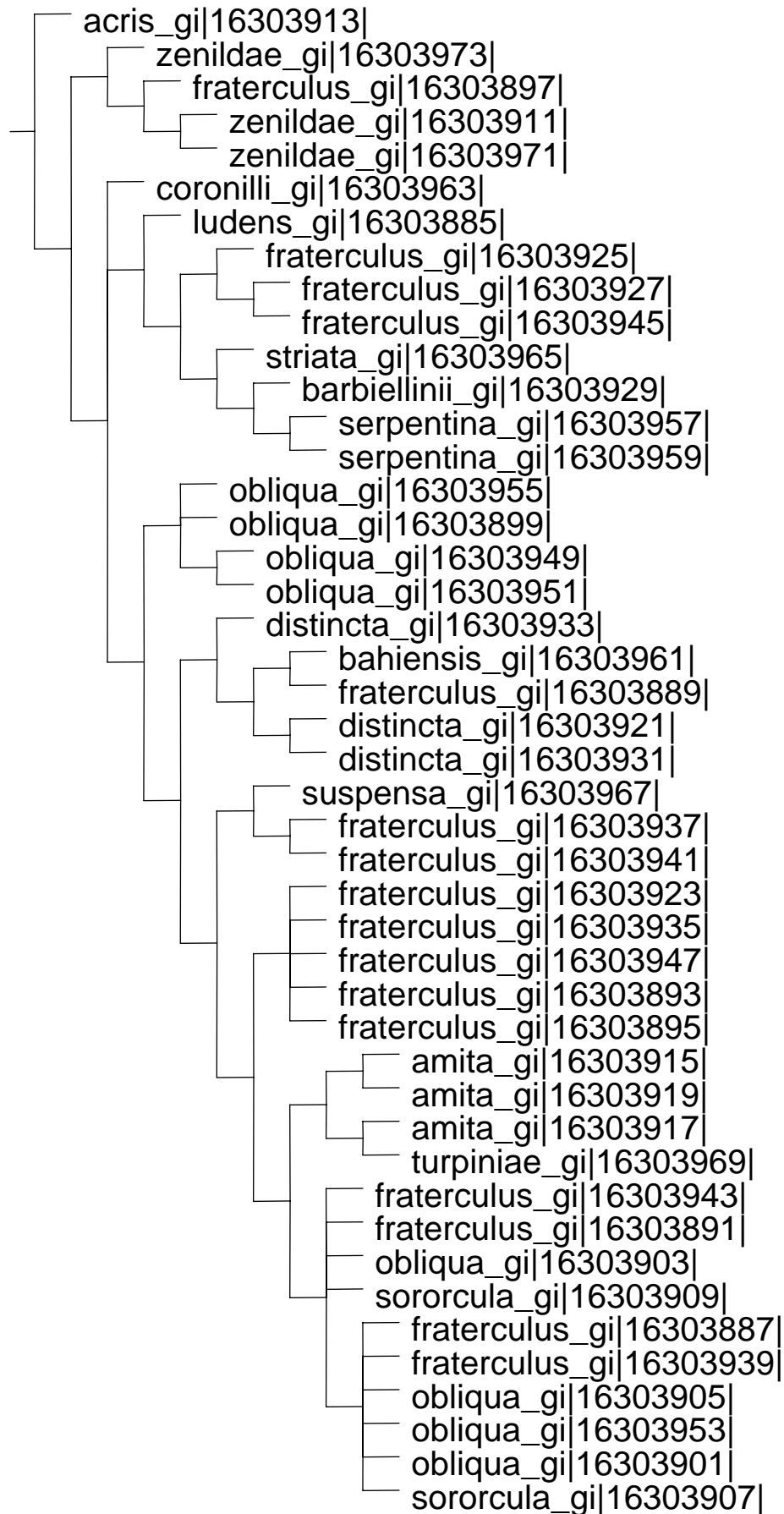
Bootstrap

Group freqs., 250 replicates, cut=50 (tree 0) - Standard Bootstrap



Anastrepha

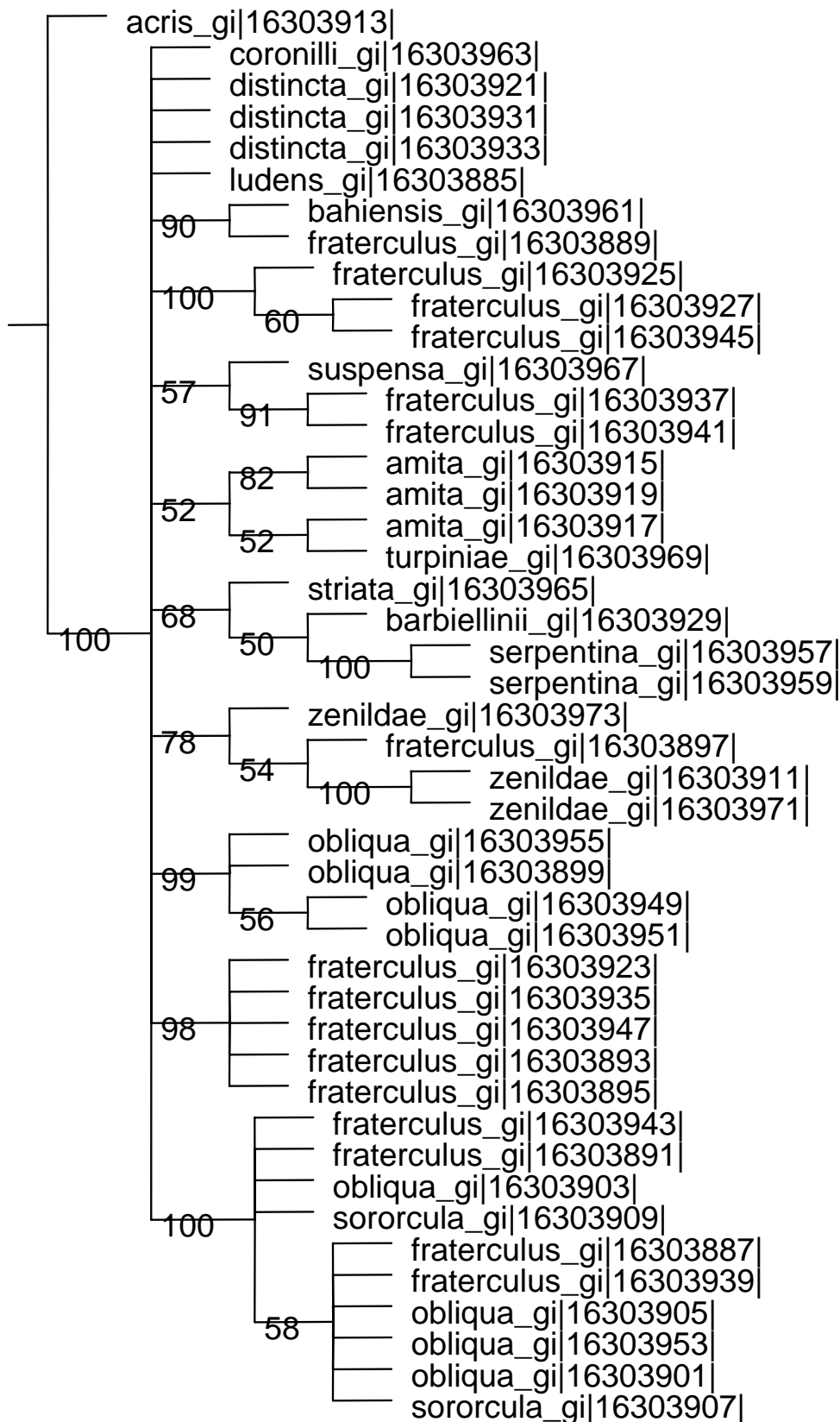
Strict consensus of 2 trees (0 taxa excluded)



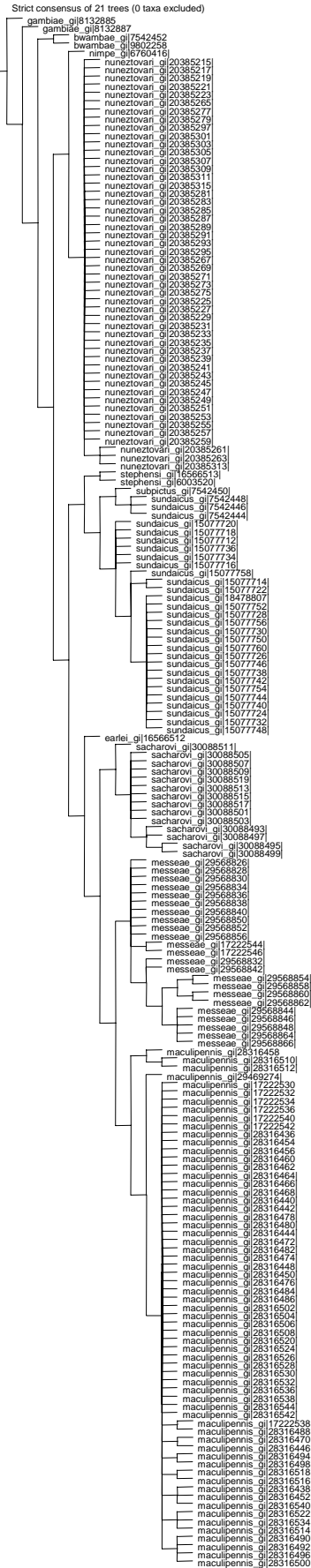
Anastrepha

Bootstrap

Group freqs., 250 replicates, cut=50 (tree 0) - Standard Bootstrap



Anopheles

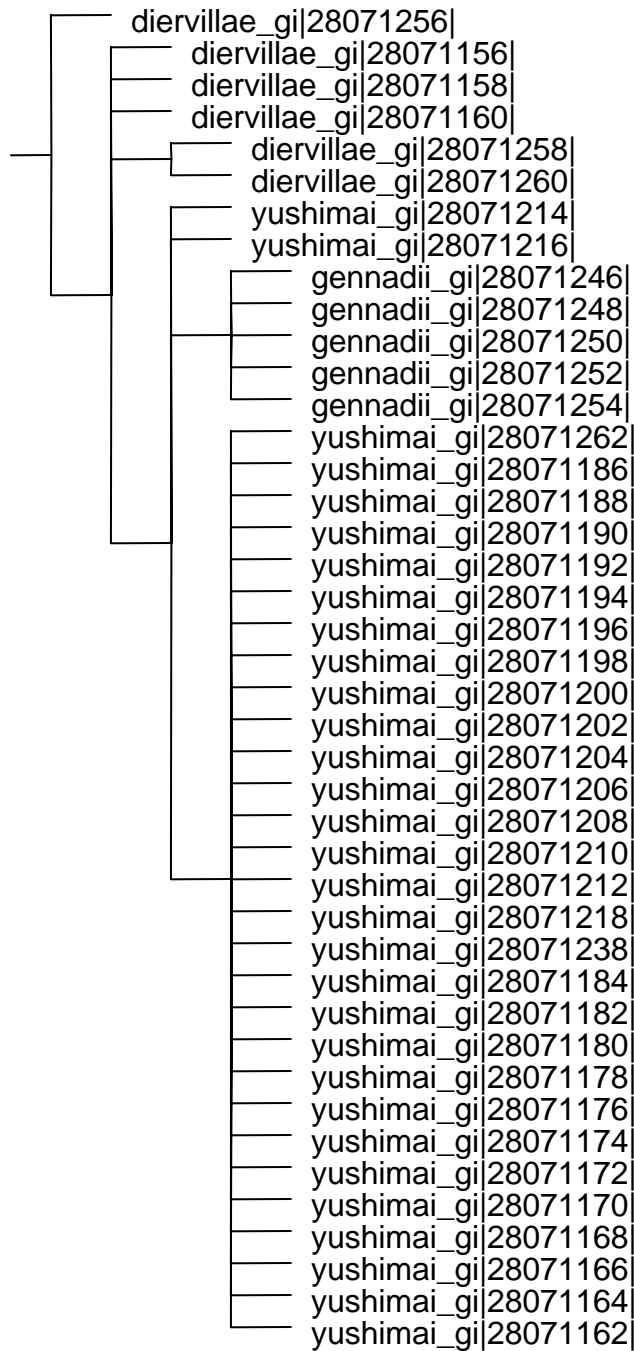


Anopheles Bootstrap



Asphondylia

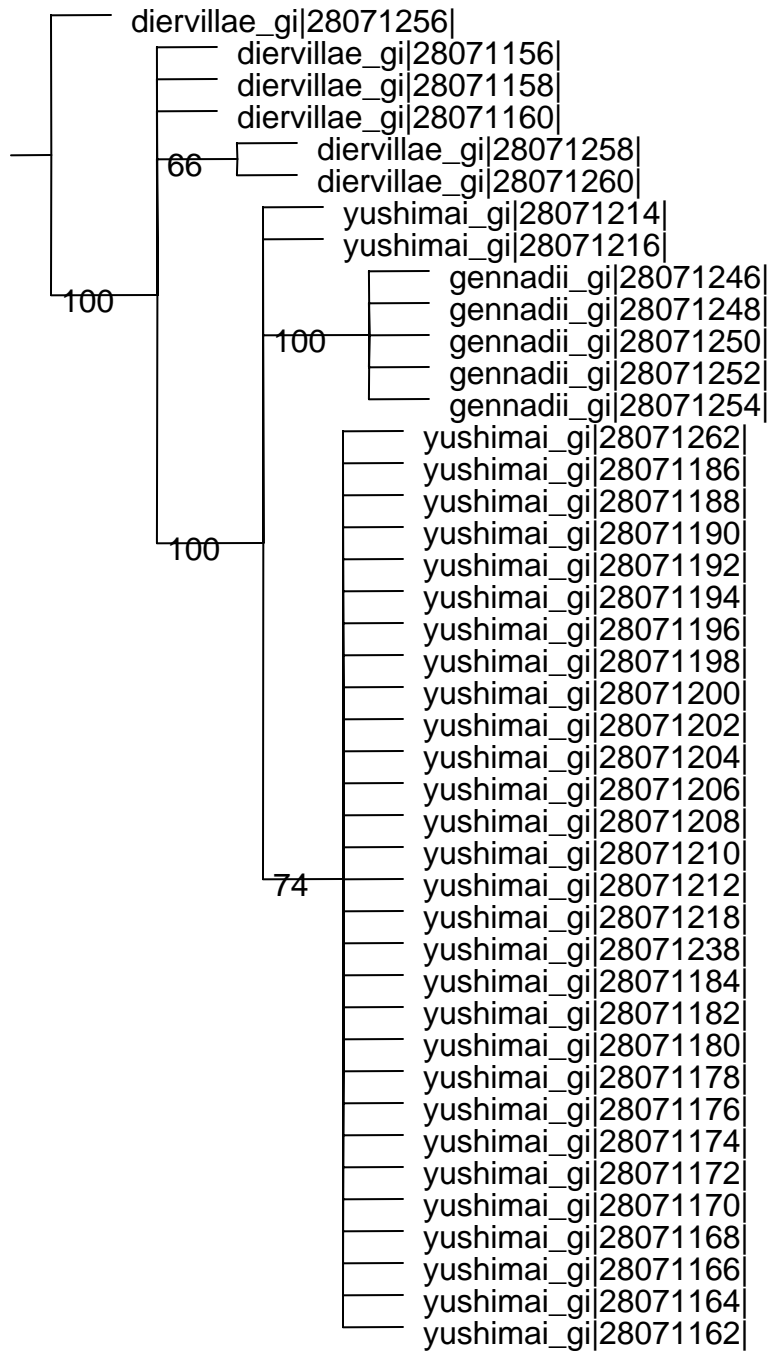
Strict consensus of 10 trees (0 taxa excluded)



Asphondylia

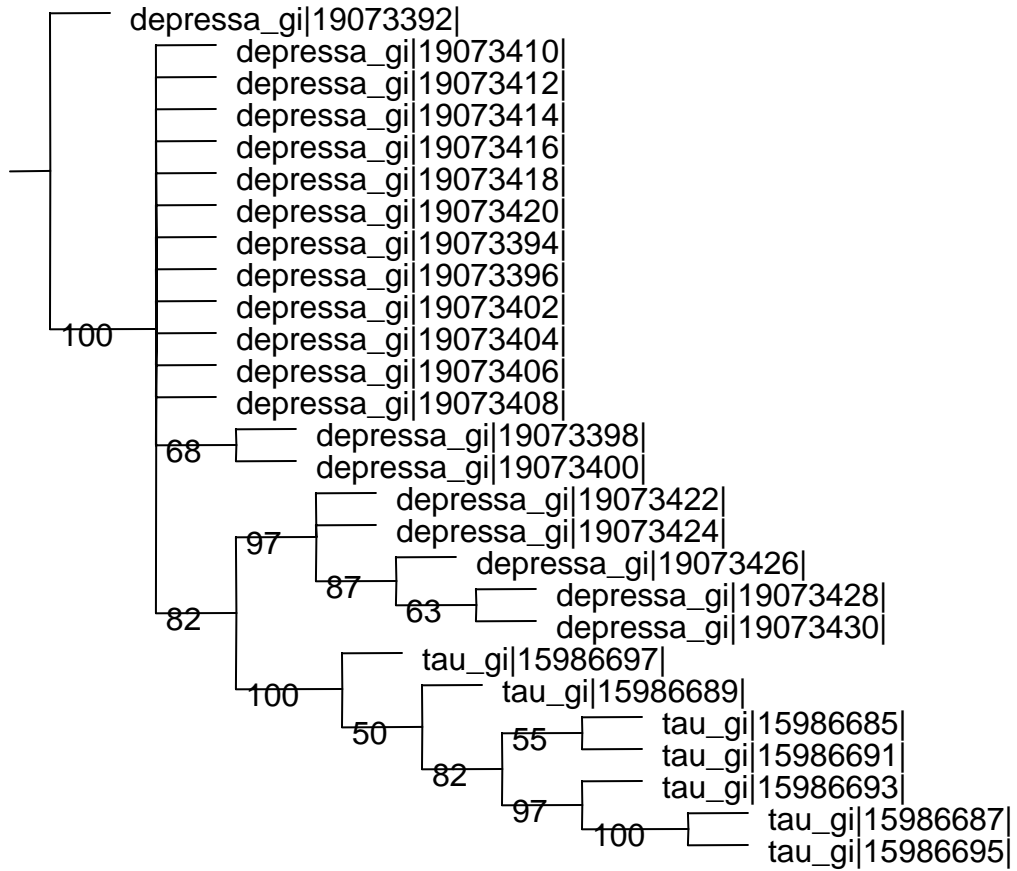
Bootstrap

Group freqs., 250 replicates, cut=50 (tree 0) - Standard Bootstrap



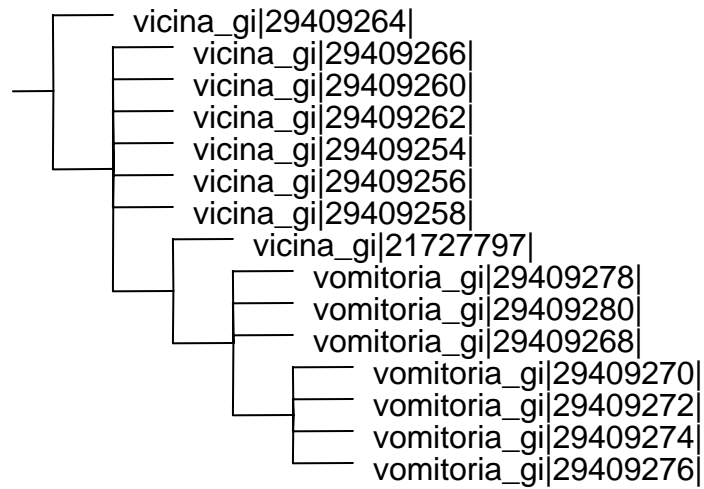
Bactrocera Bootstrap

Group freqs., 250 replicates, cut=50 (tree 0) - Standard Bootstrap



Calliphora

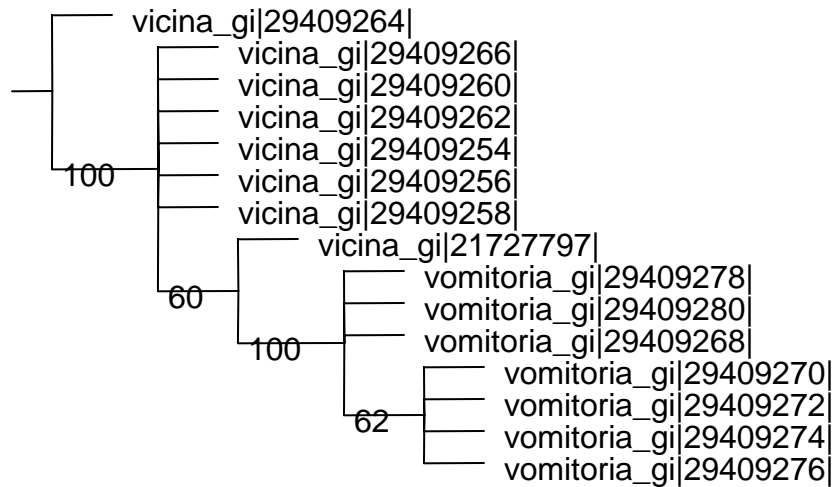
Strict consensus of 1 trees (0 taxa excluded)



Calliphora

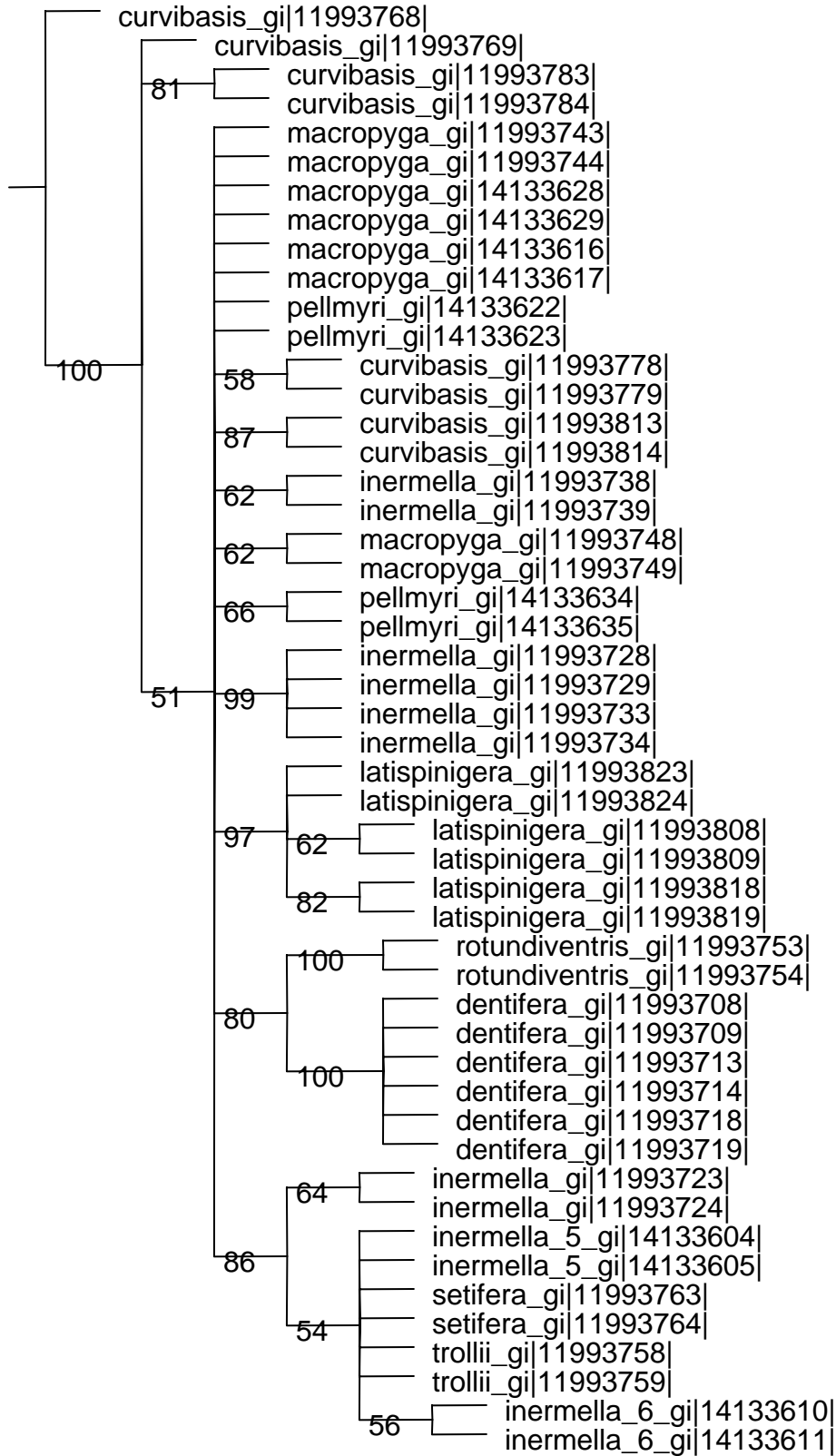
Bootstrap

Group freqs., 250 replicates, cut=50 (tree 0) - Standard Bootstrap



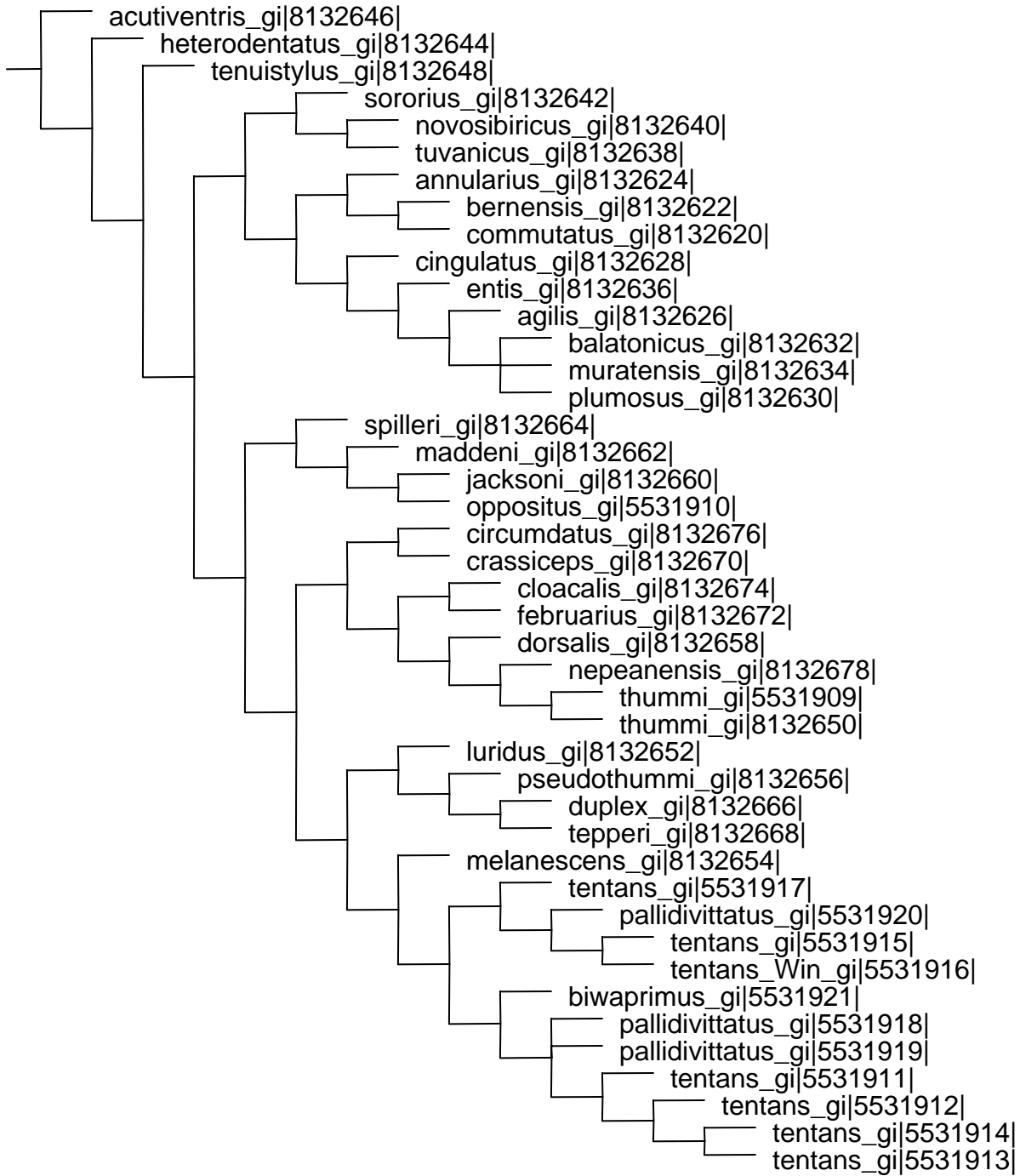
Chiastocheta

Bootstrap Group freqs., 250 replicates, cut=50 (tree 0) - Standard Bootstrap



Chironomus

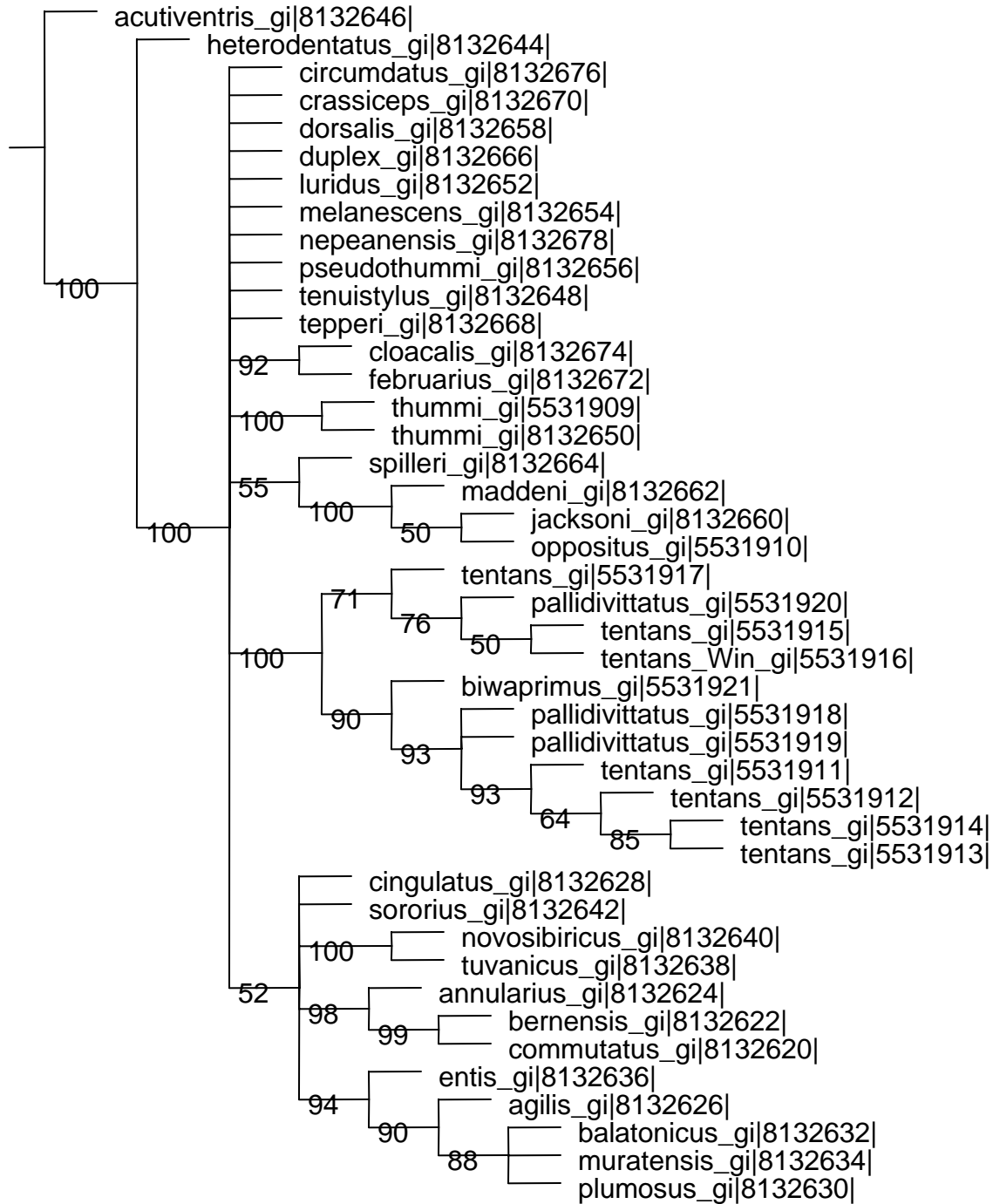
Strict consensus of 6 trees (0 taxa excluded)



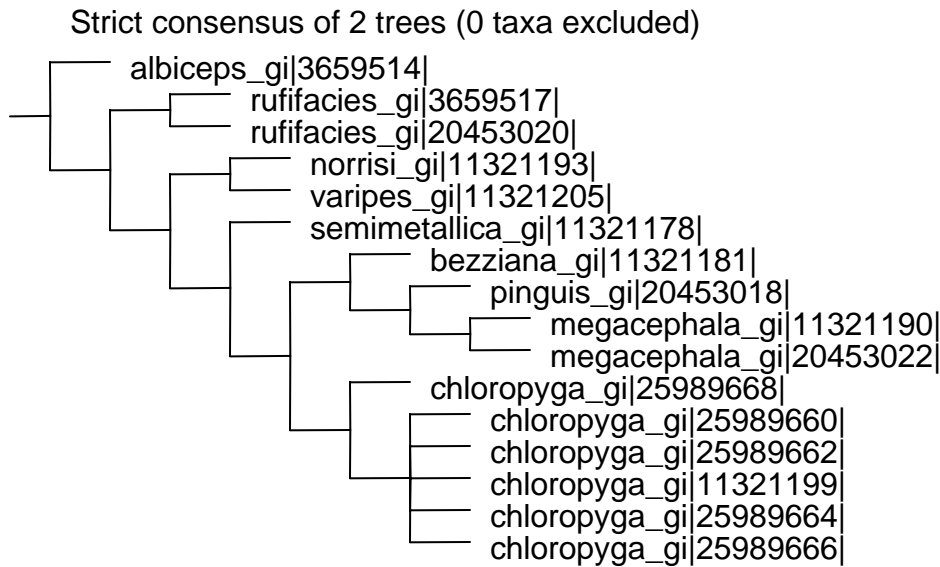
Chironomus

Bootstrap

Group freqs., 250 replicates, cut=50 (tree 0) - Standard Bootstrap



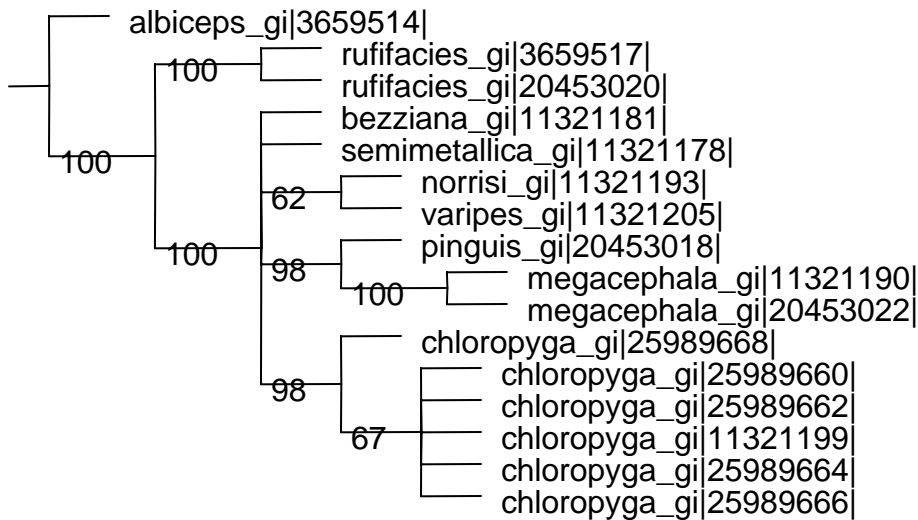
Chrysomya



Chrysomya

Bootstrap

Group freqs., 250 replicates, cut=50 (tree 0) - Standard Bootstrap

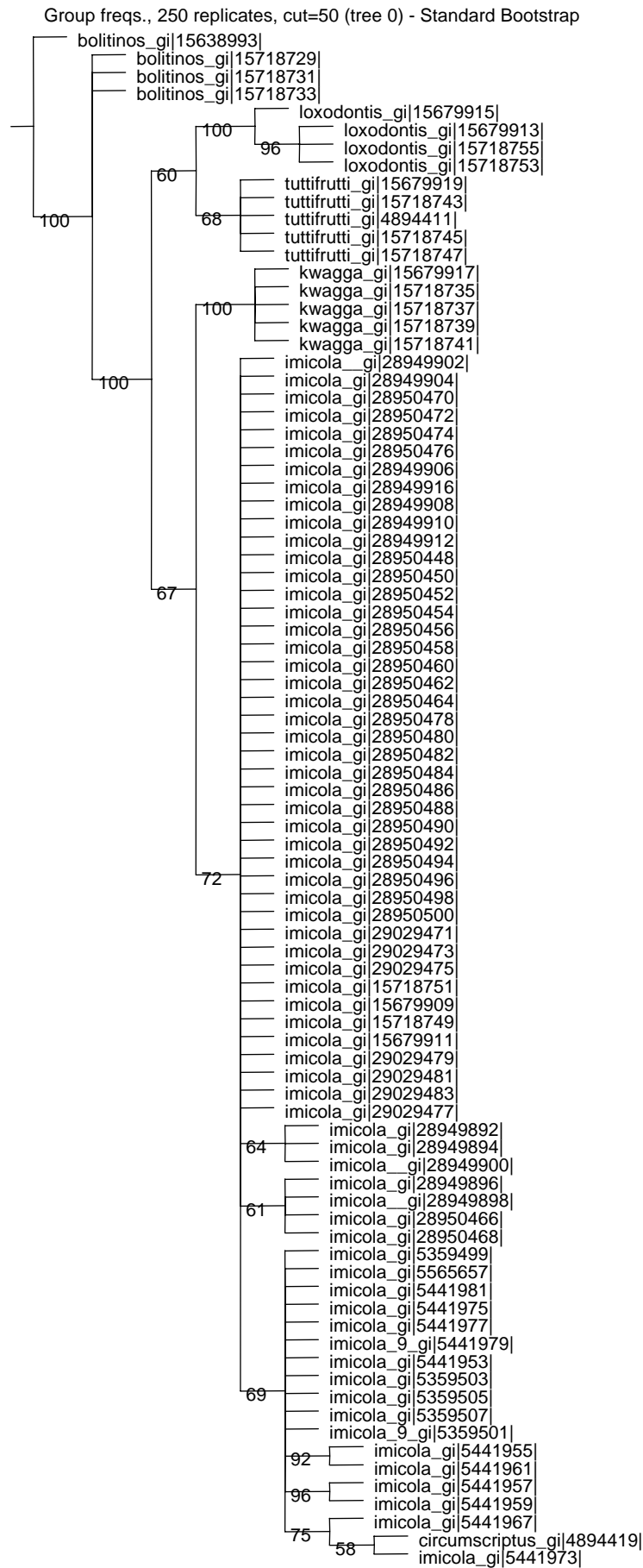


Culicoides

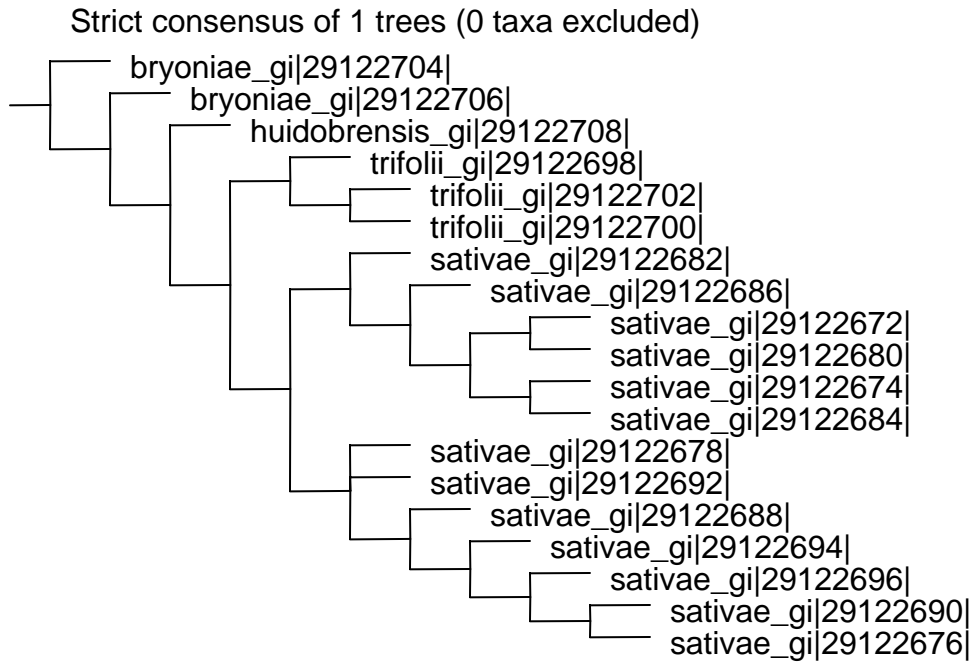
Strict consensus of 19 trees (0 taxa excluded)



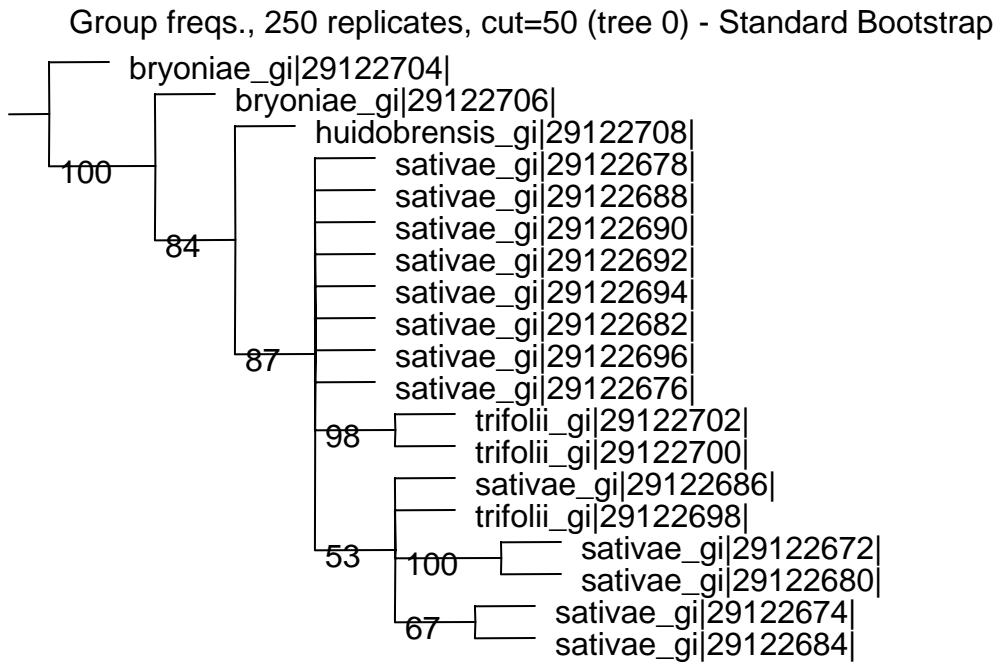
Culicoides Bootstrap



Liriomyza

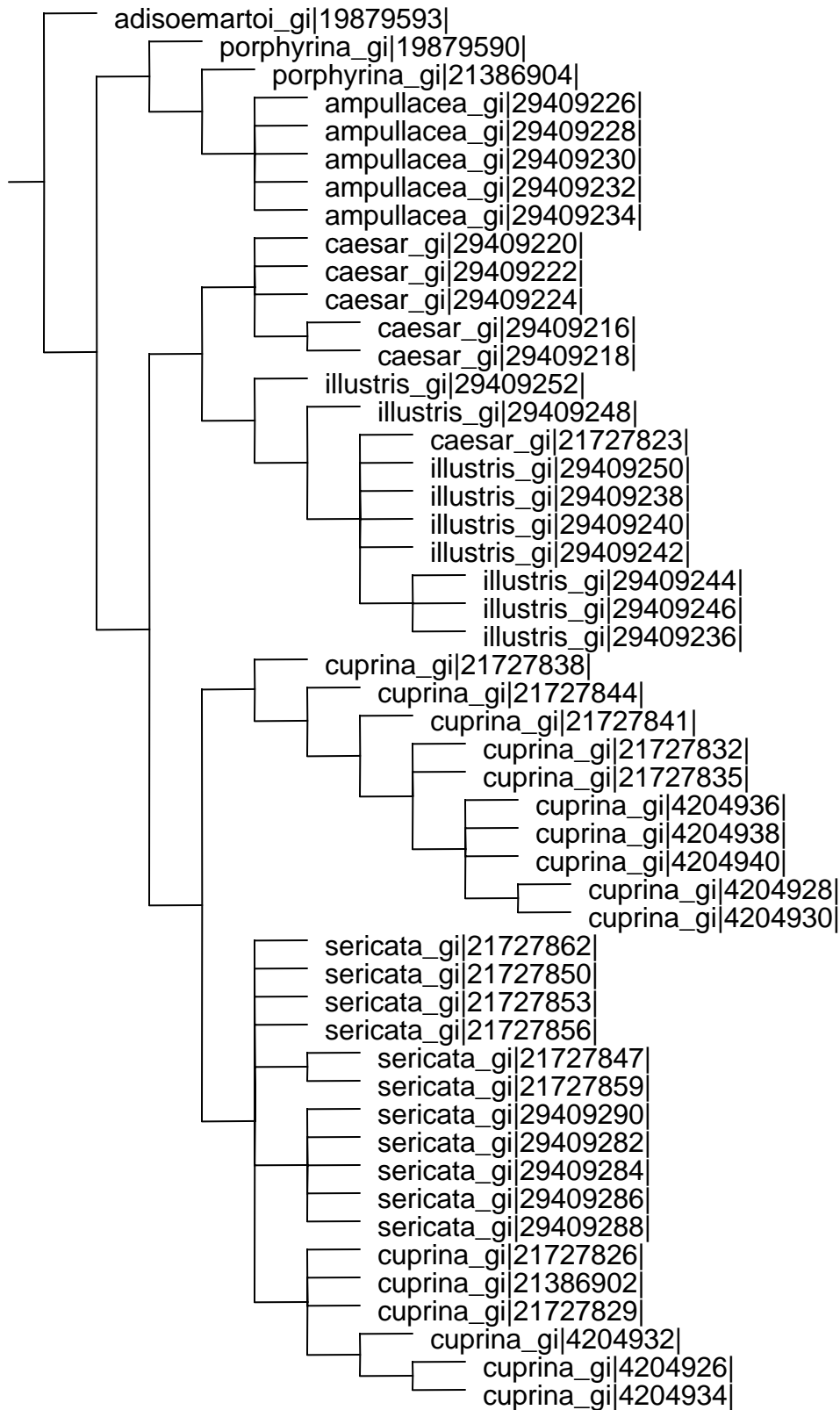


Liriomyza Bootstrap



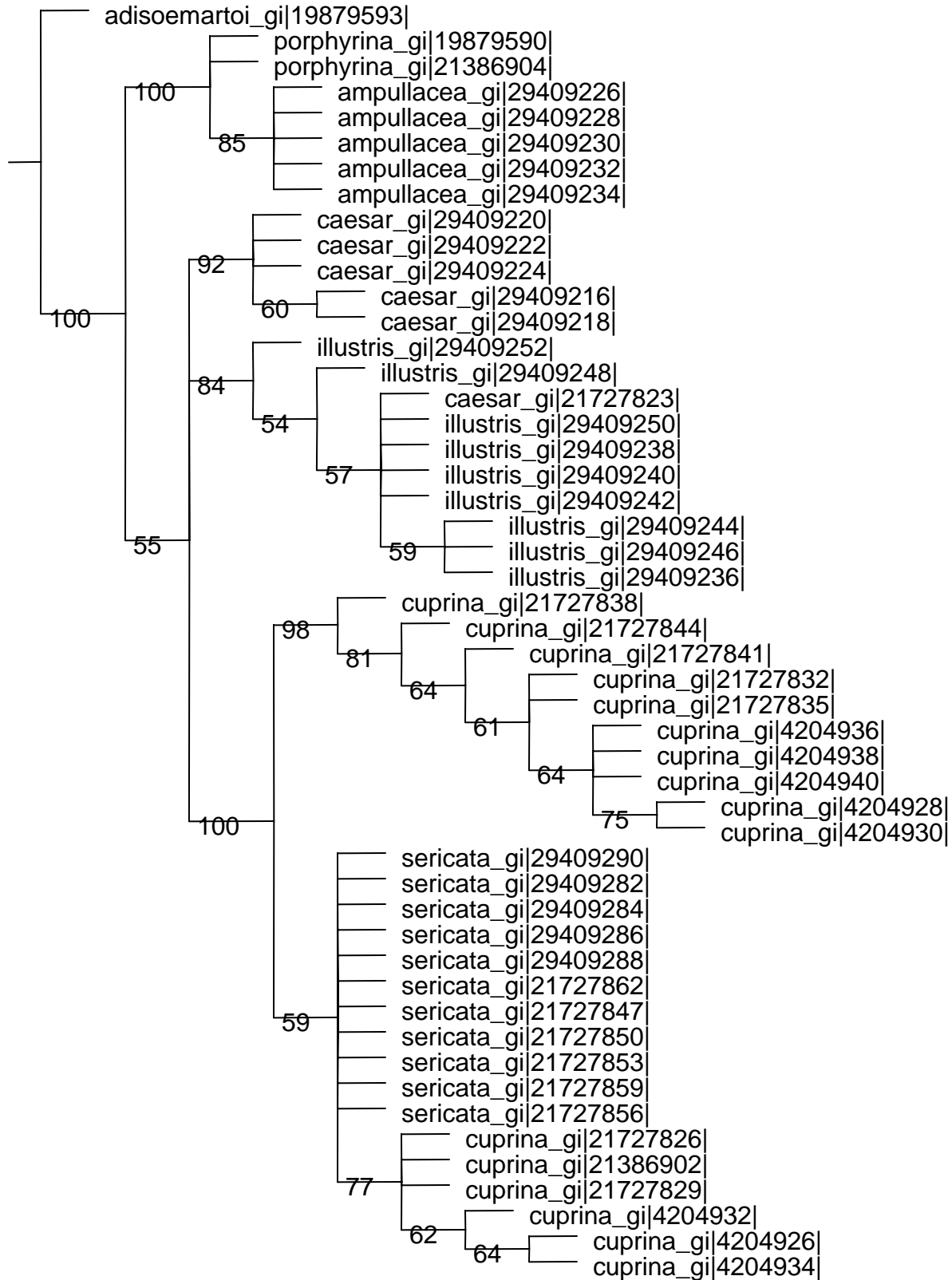
Lucilia

Strict consensus of 7 trees (0 taxa excluded)

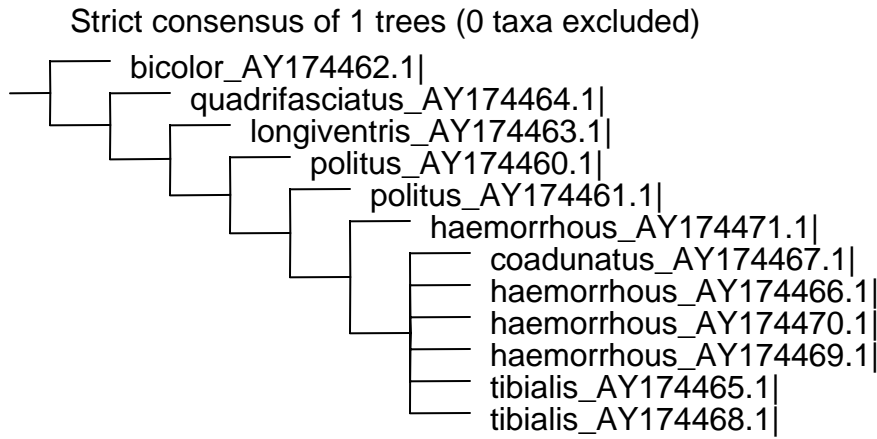


Lucilia Bootstrap

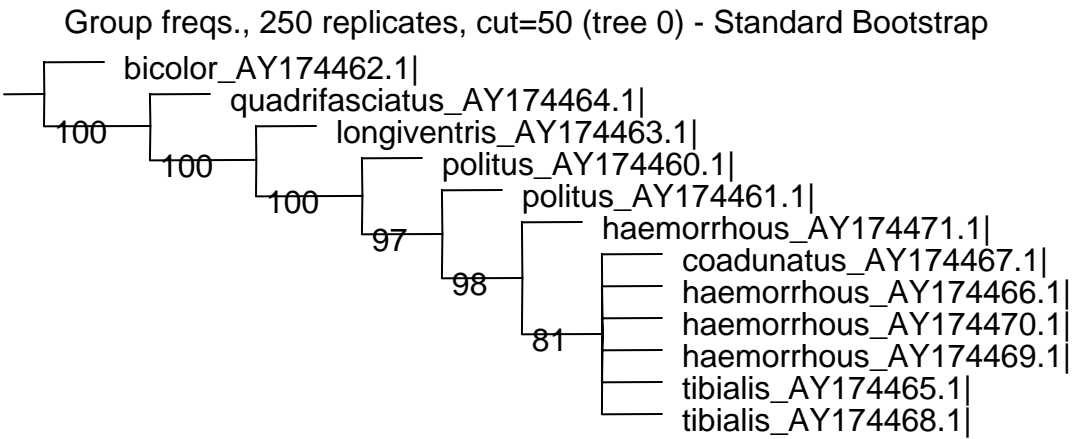
Group freqs., 250 replicates, cut=50 (tree 0) - Standard Bootstrap



Paragus

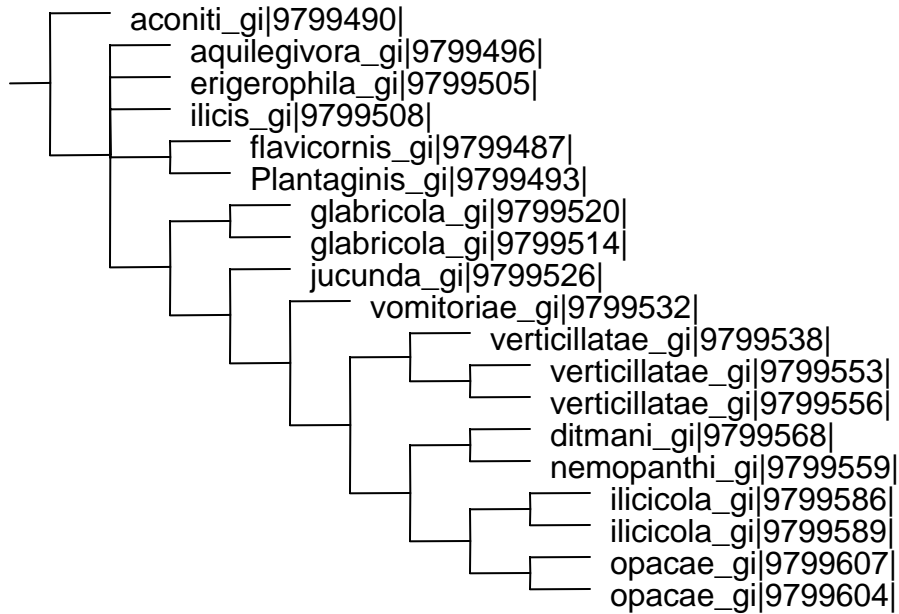


Paragus Bootstrap



Phytomyza

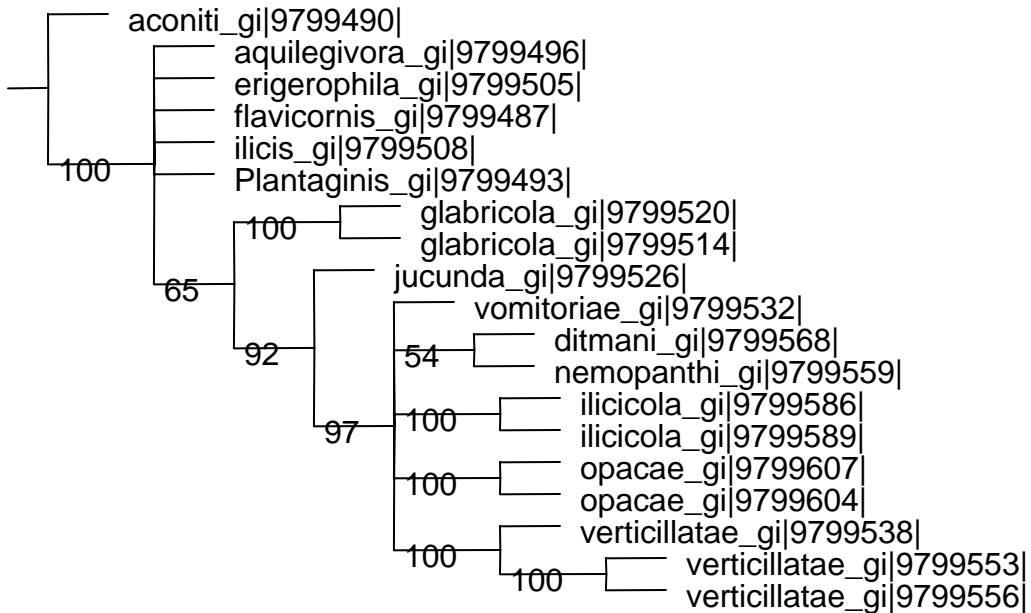
Strict consensus of 5 trees (0 taxa excluded)



Phytomyza

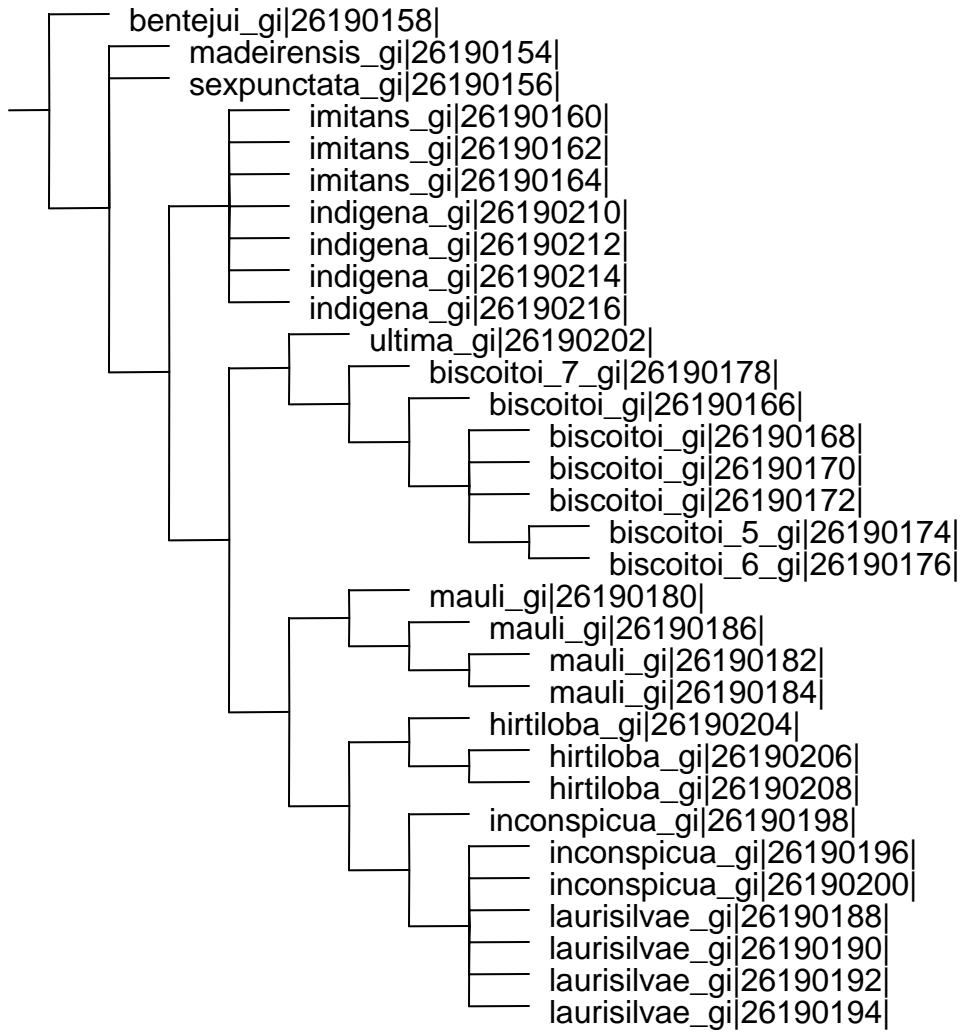
Bootstrap

Group freqs., 250 replicates, cut=50 (tree 0) - Standard Bootstrap



Sapromyza

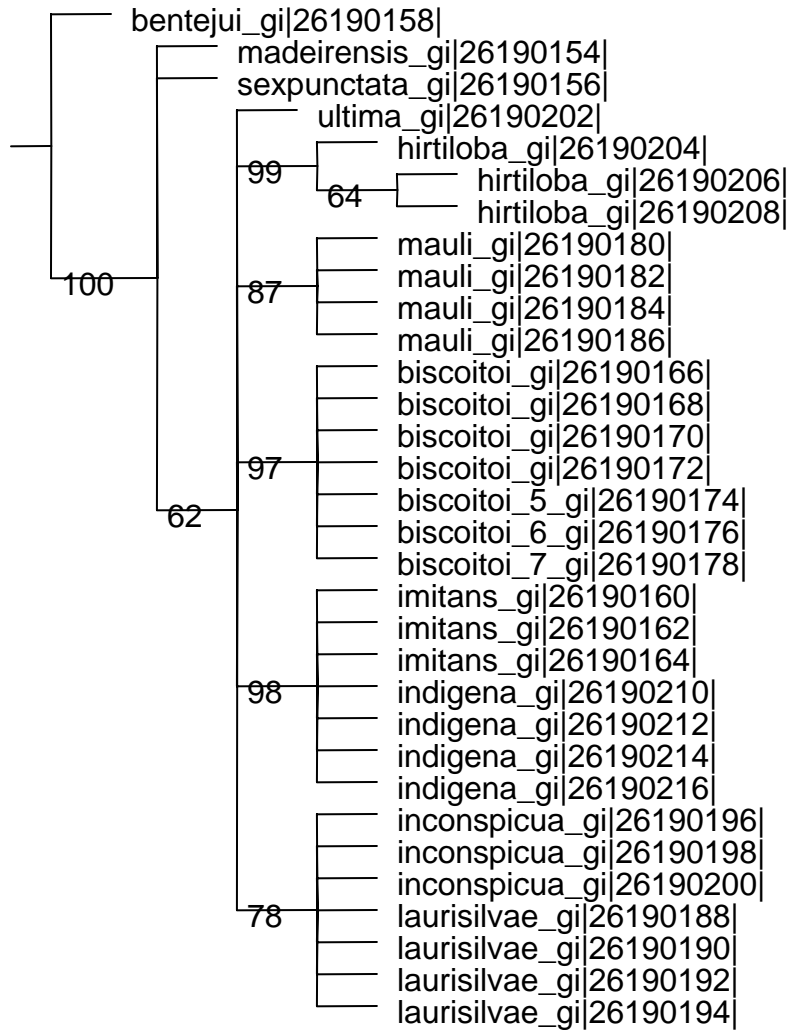
Strict consensus of 9 trees (0 taxa excluded)



Sapromyza

Bootstrap

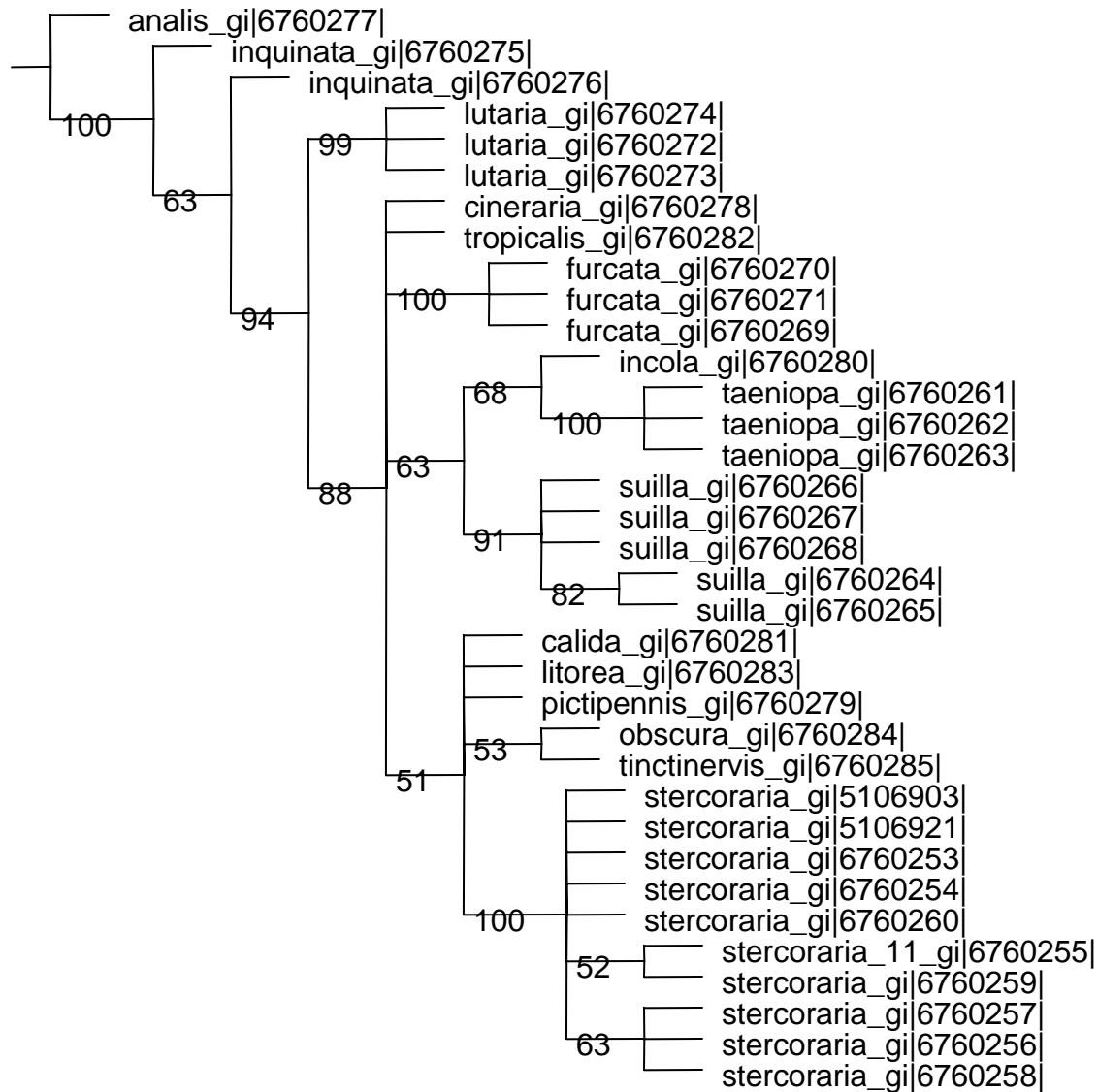
Group freqs., 250 replicates, cut=50 (tree 0) - Standard Bootstrap



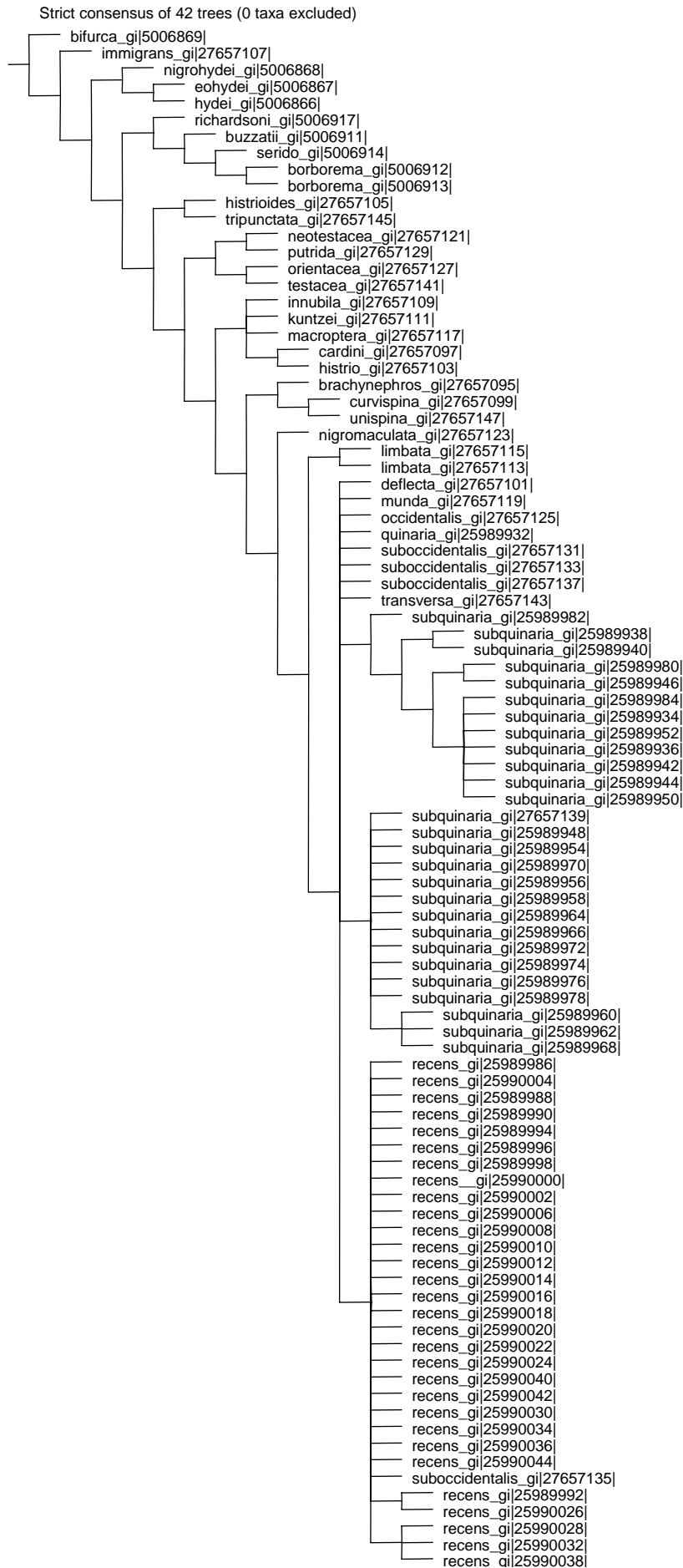
Scathophaga

Bootstrap

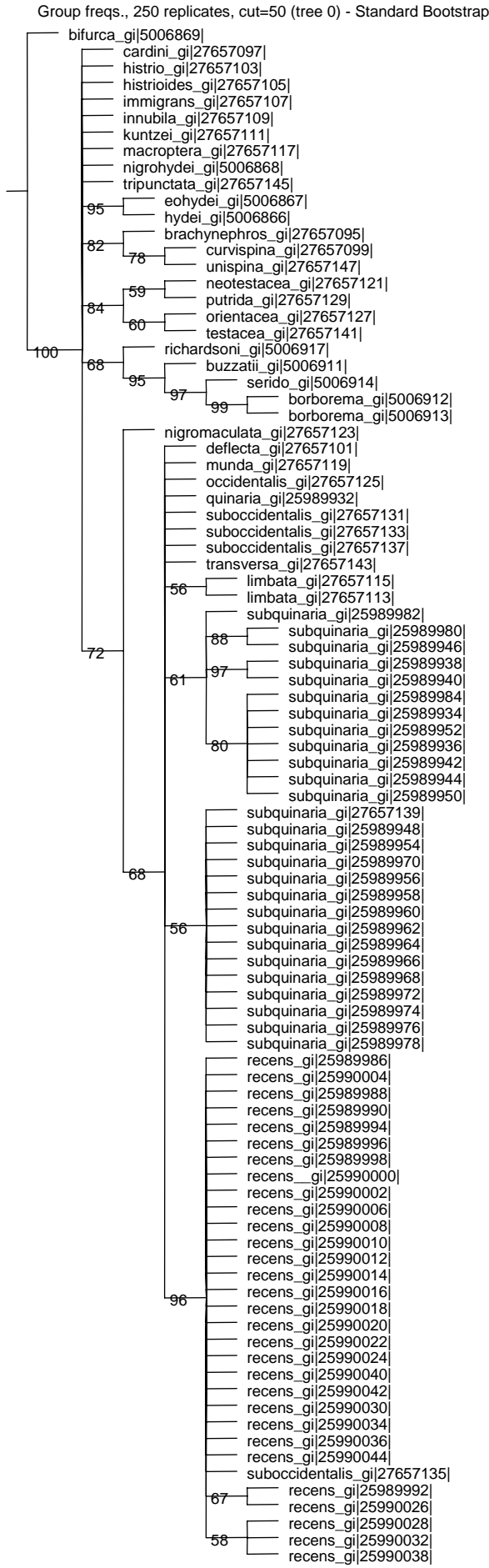
Group freqs., 250 replicates, cut=50 (tree 0) - Standard Bootstrap



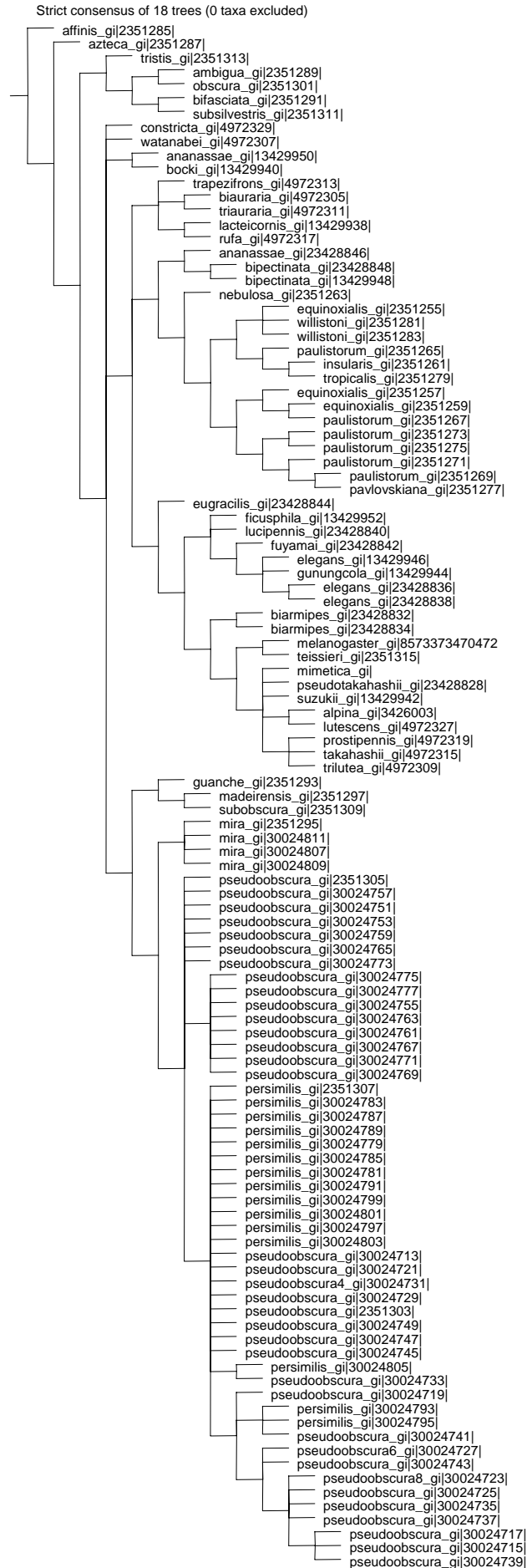
Subgenus *Drosophila*



Subgenus *Drosophila* Bootstrap



Subgenus *Sophophora*



Subgenus *Sophophora* Bootstrap

GC values, 250 replicates, cut=1 (tree 0) - Standard Bootstrap

