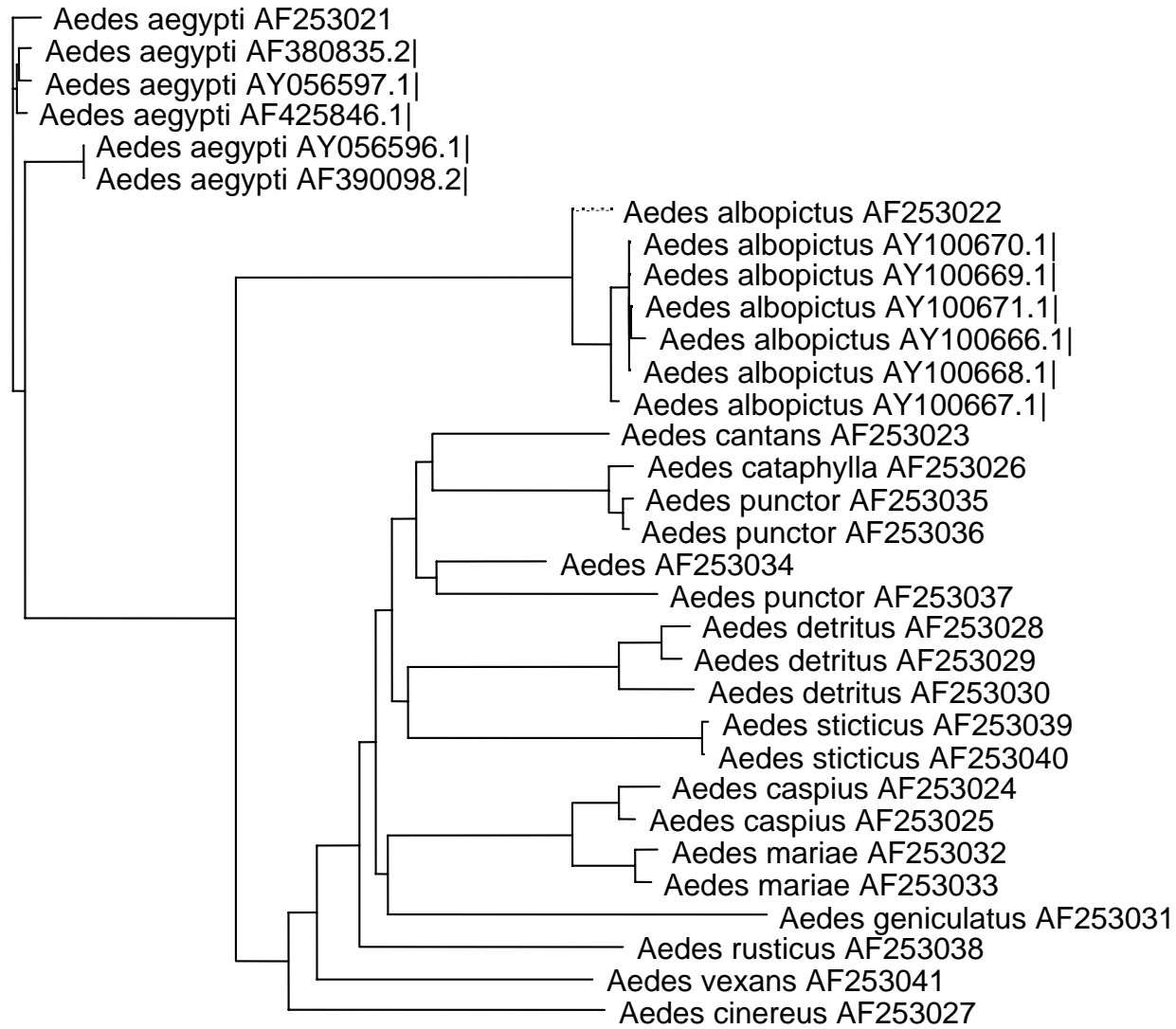


Supplementary Information 1.

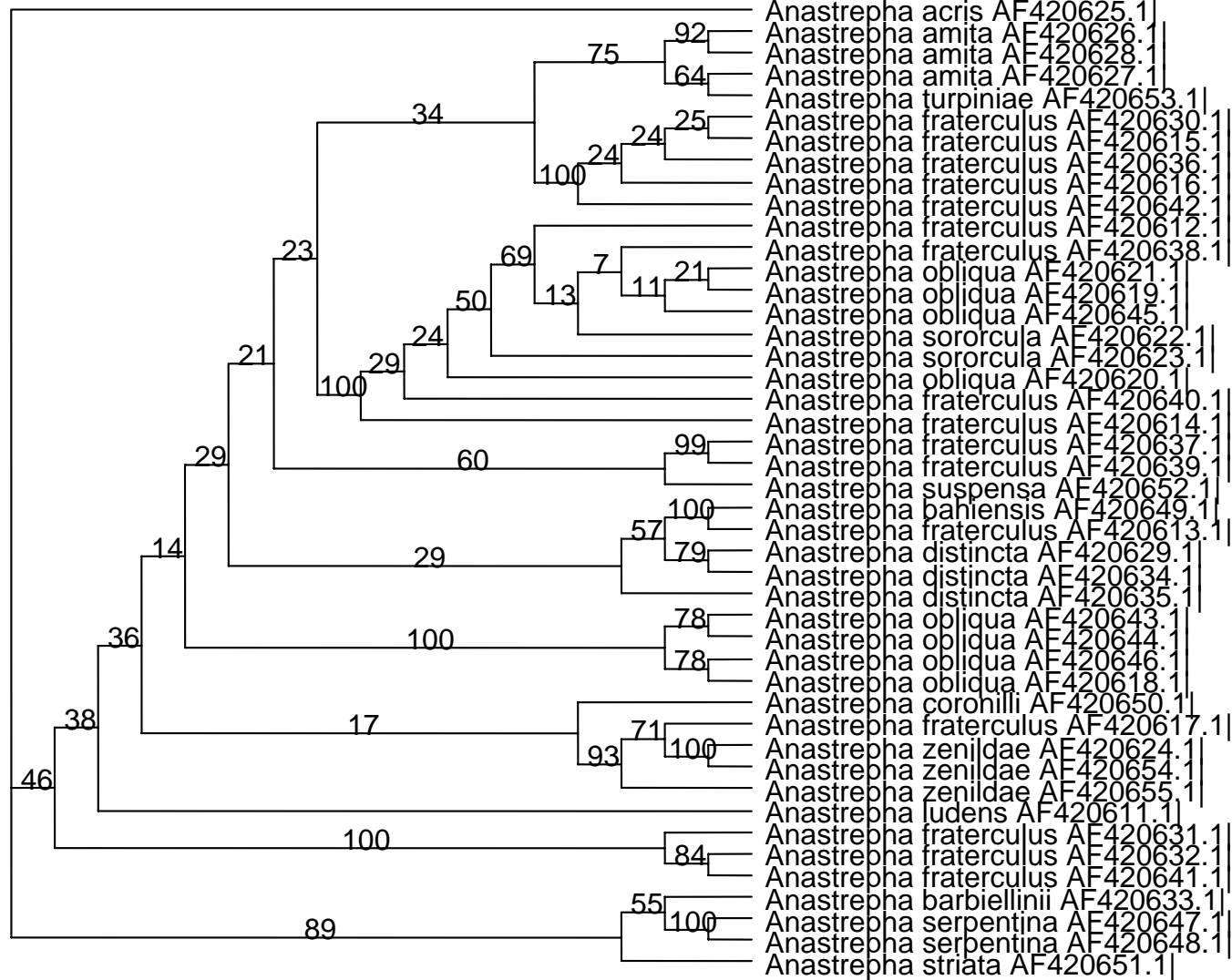
Neighbor joining phylograms and bootstrap trees for genera with multiple intra- and interspecific sequences (*Aedes*, *Anastrepha*, *Anopheles*, *Asphondylia*, *Bactrocera*, *Calliphora*, *Chiastocheta*, *Chironomus*, *Chrysomya*, *Culicoides*, *Drosophila* (*Drosophila*), *Drosophila* (*Sophophora*), *Liriomyza*, *Lucilia*, *Paragus*, *Phytomyza*, *Sapromyza*, *Scathophaga*)

NJ

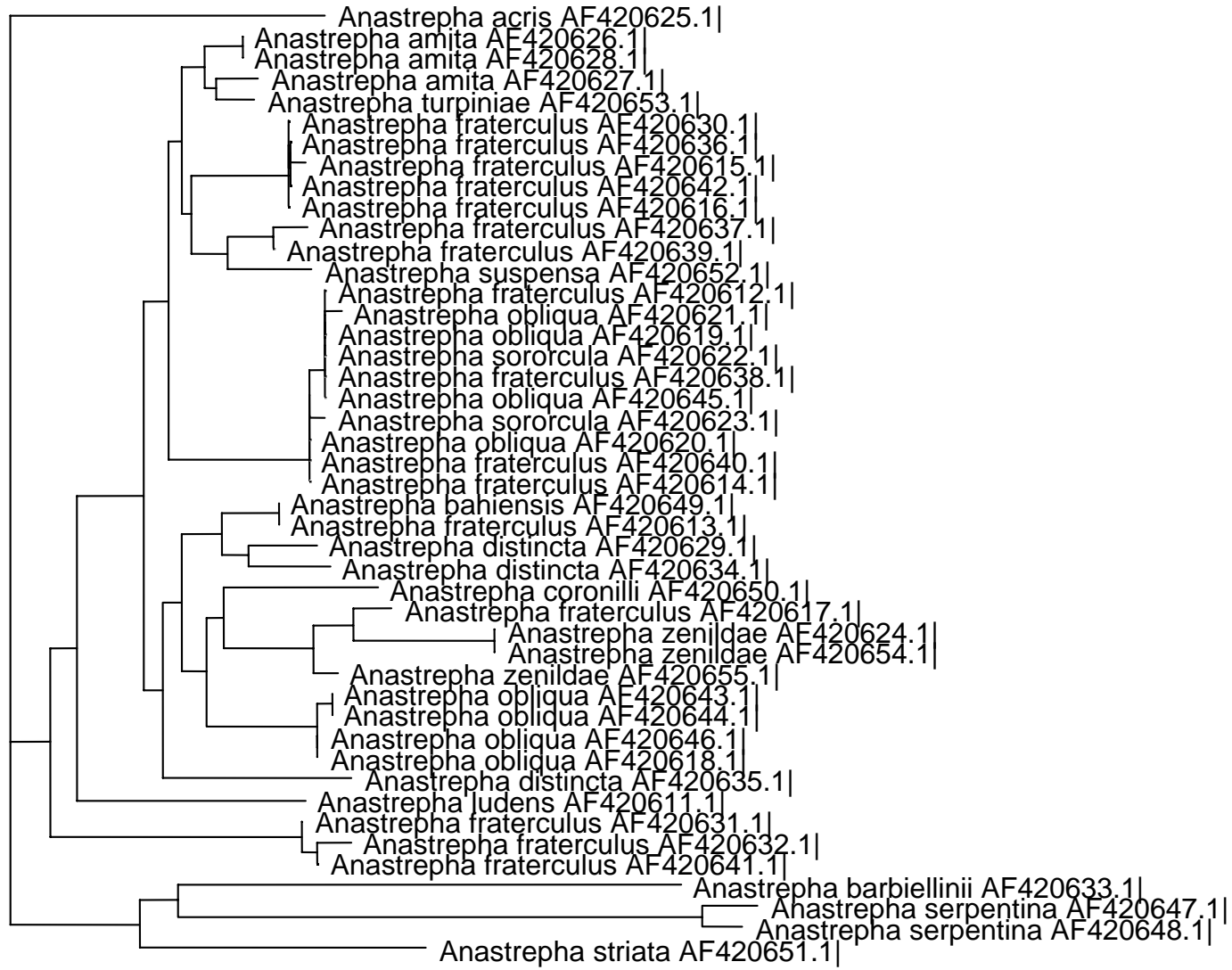


— 0.01 substitutions/site

Bootstrap

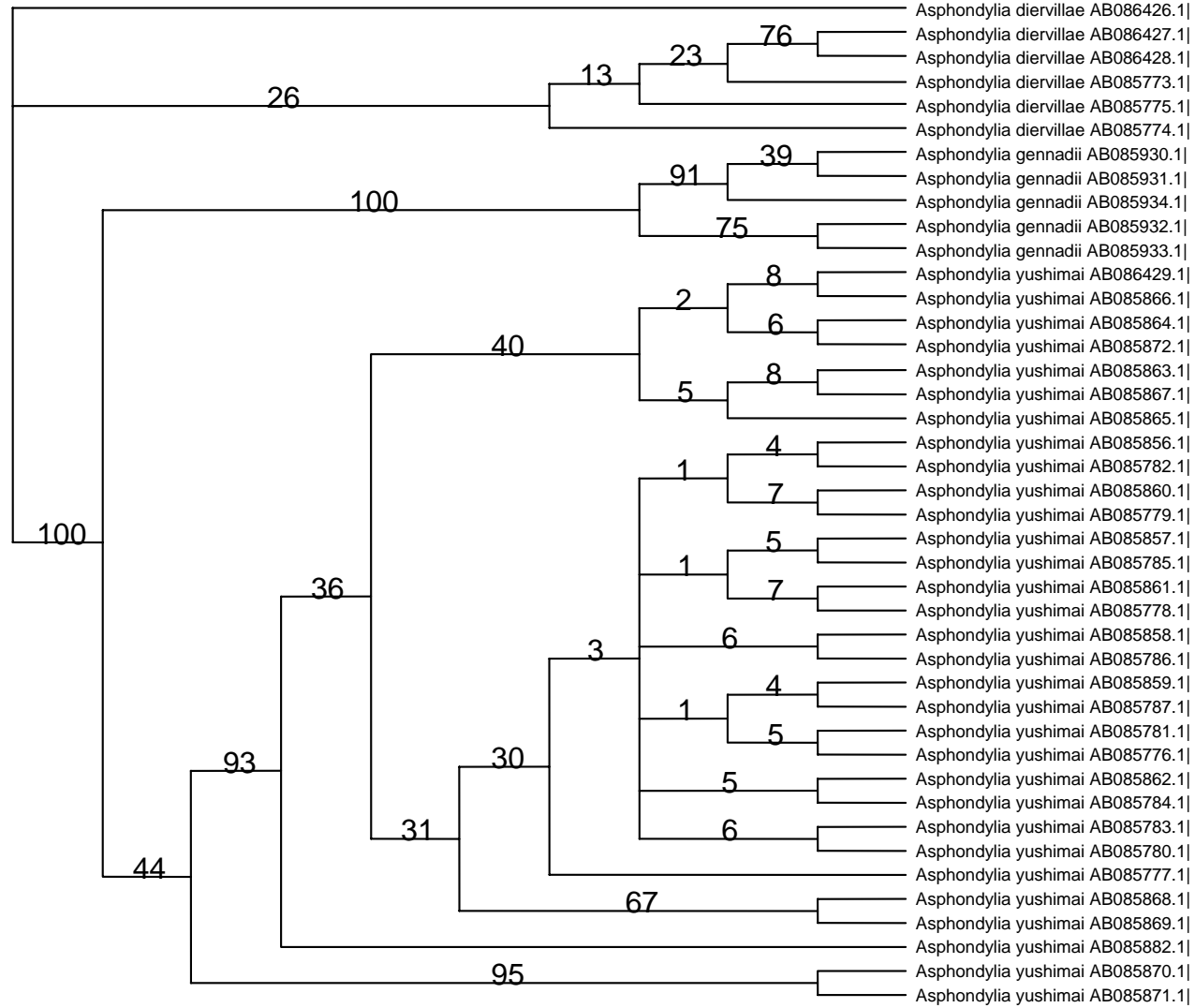


NJ

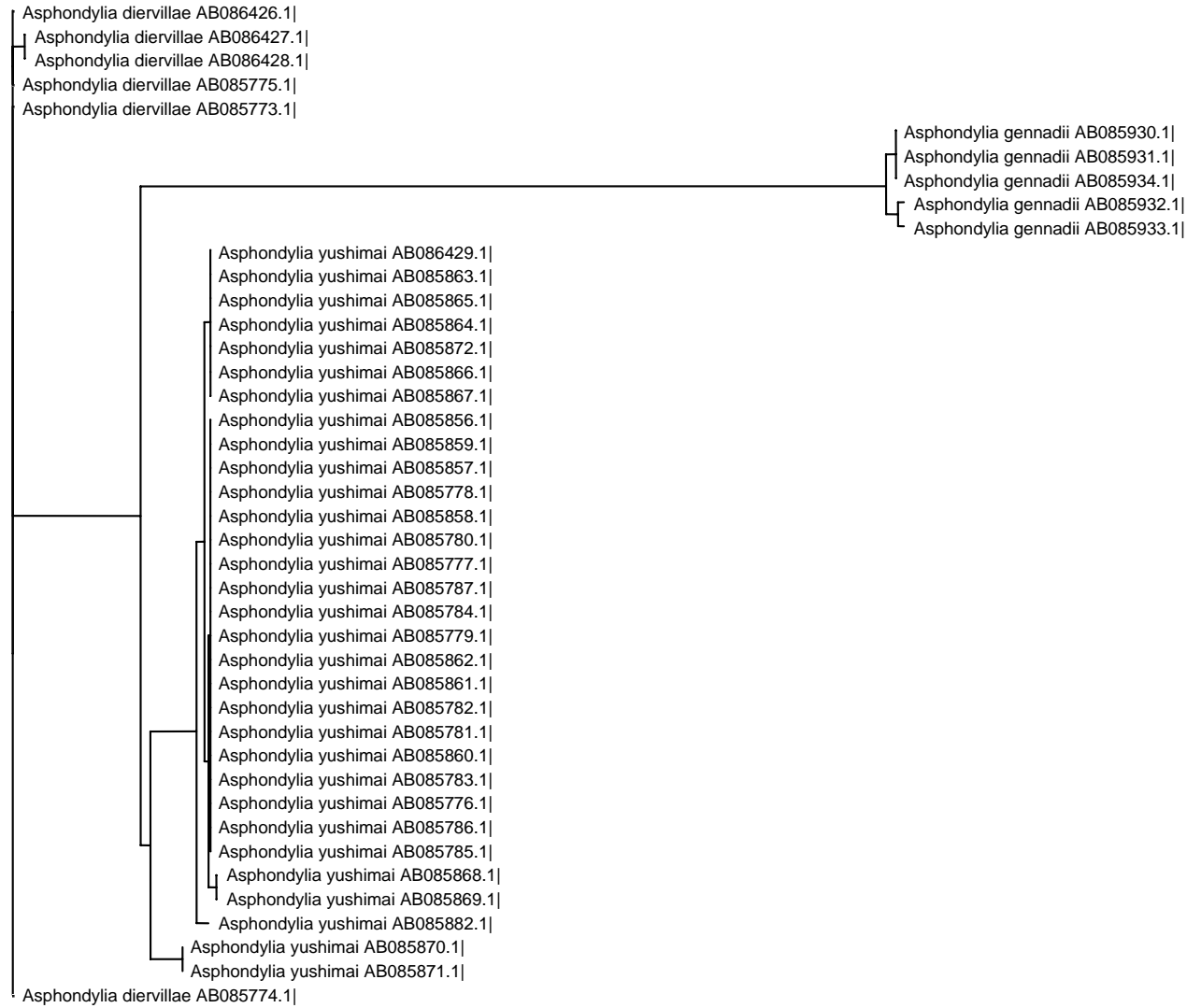


0.005 substitutions/site

Bootstrap

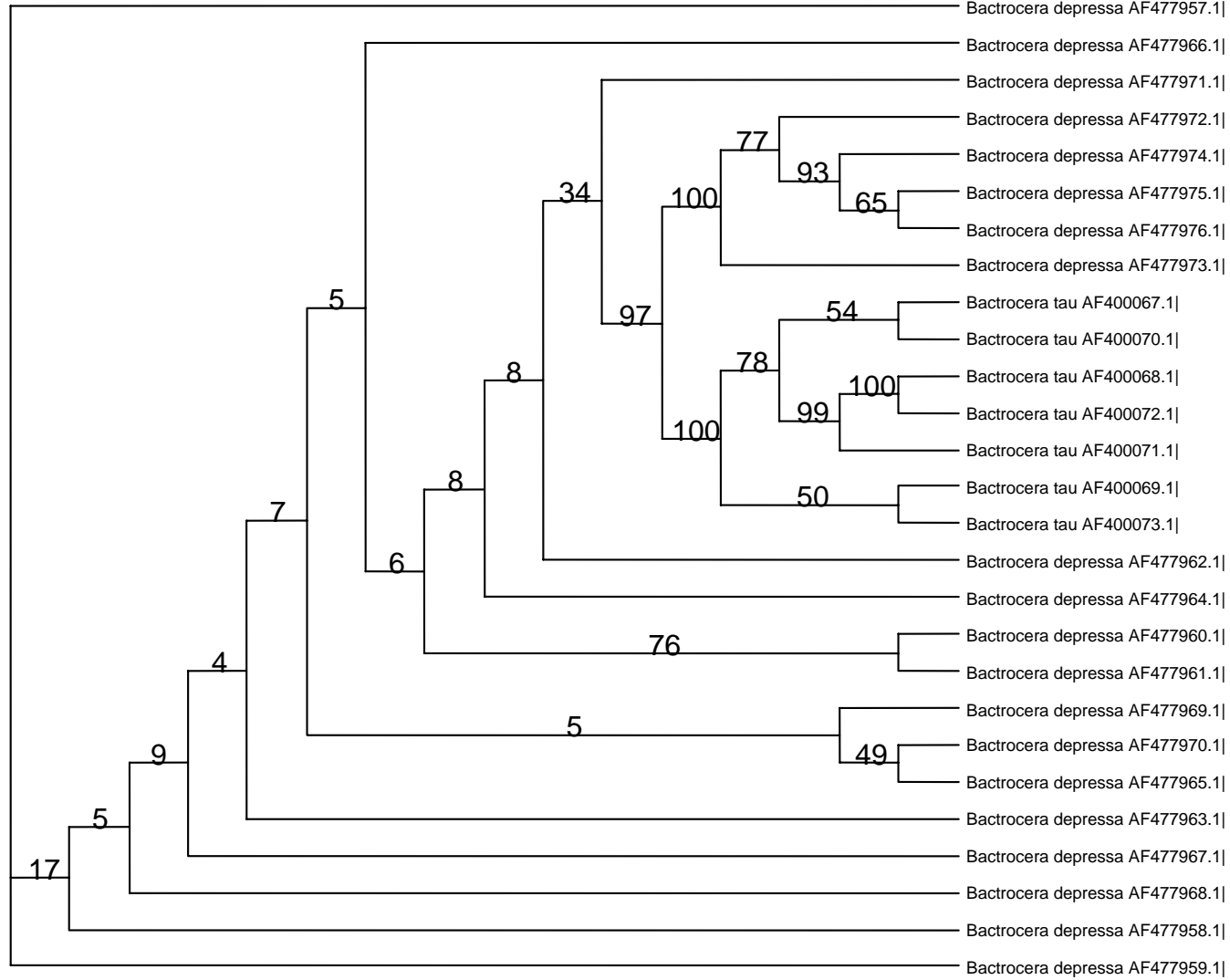


NJ

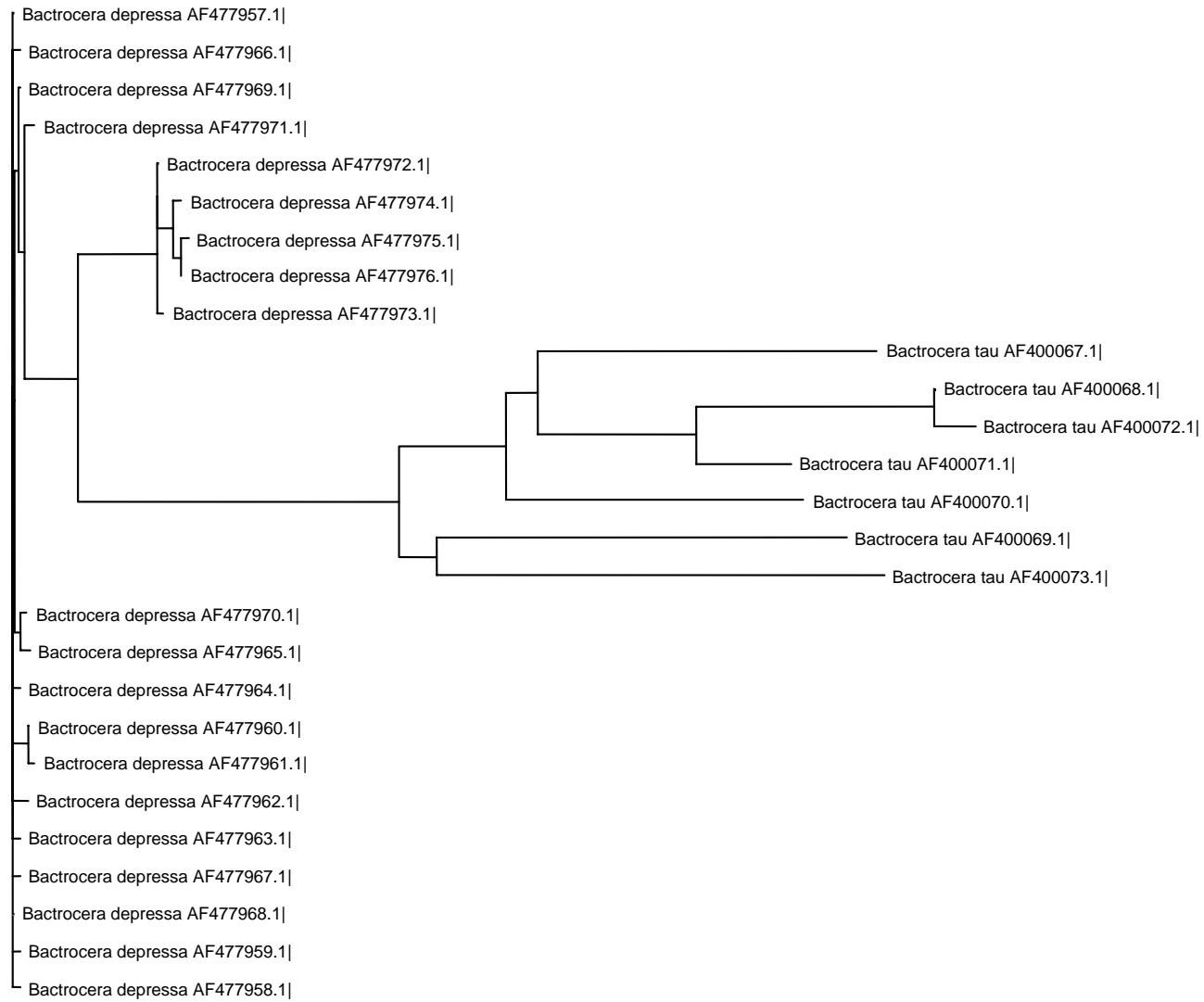


— 0.005 substitutions/site

Bootstrap

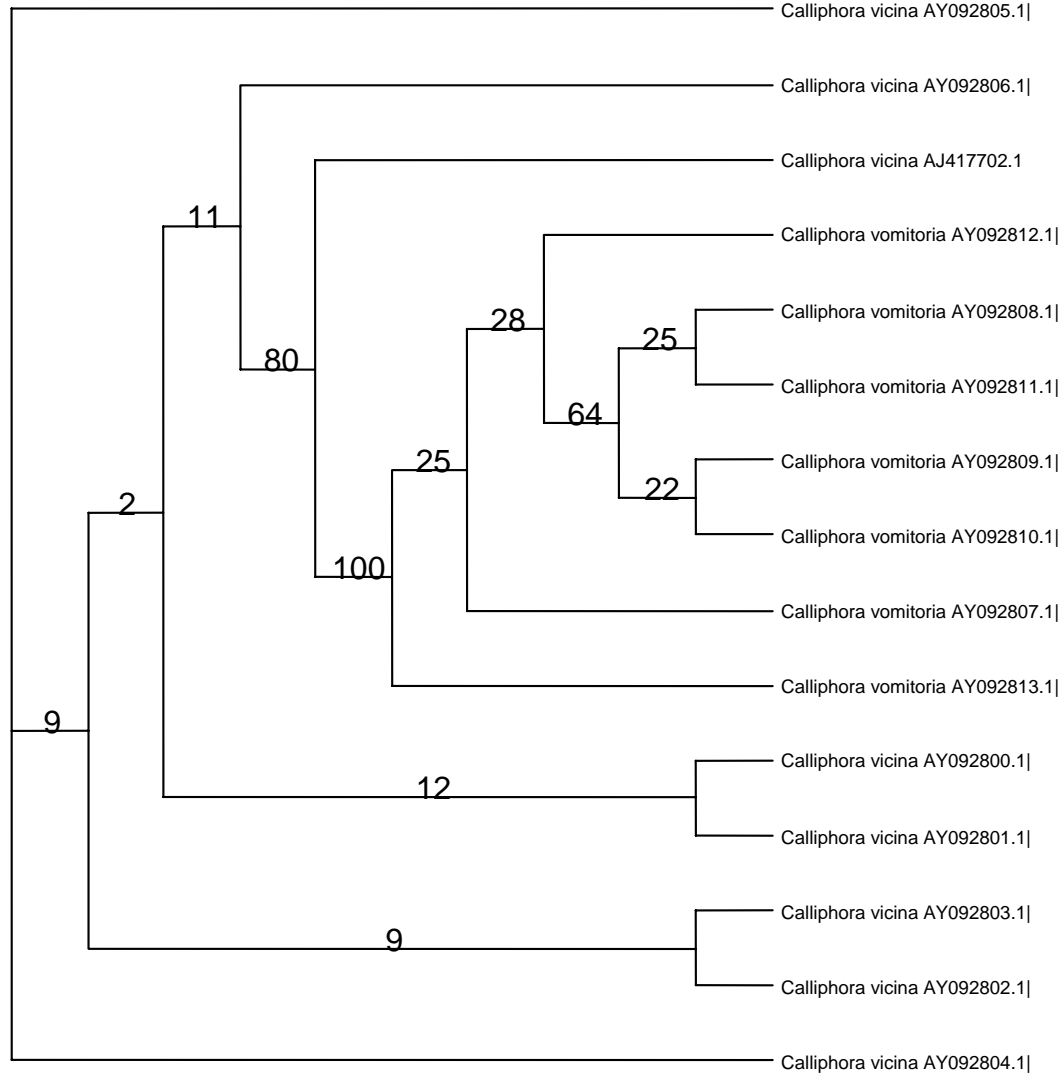


NJ

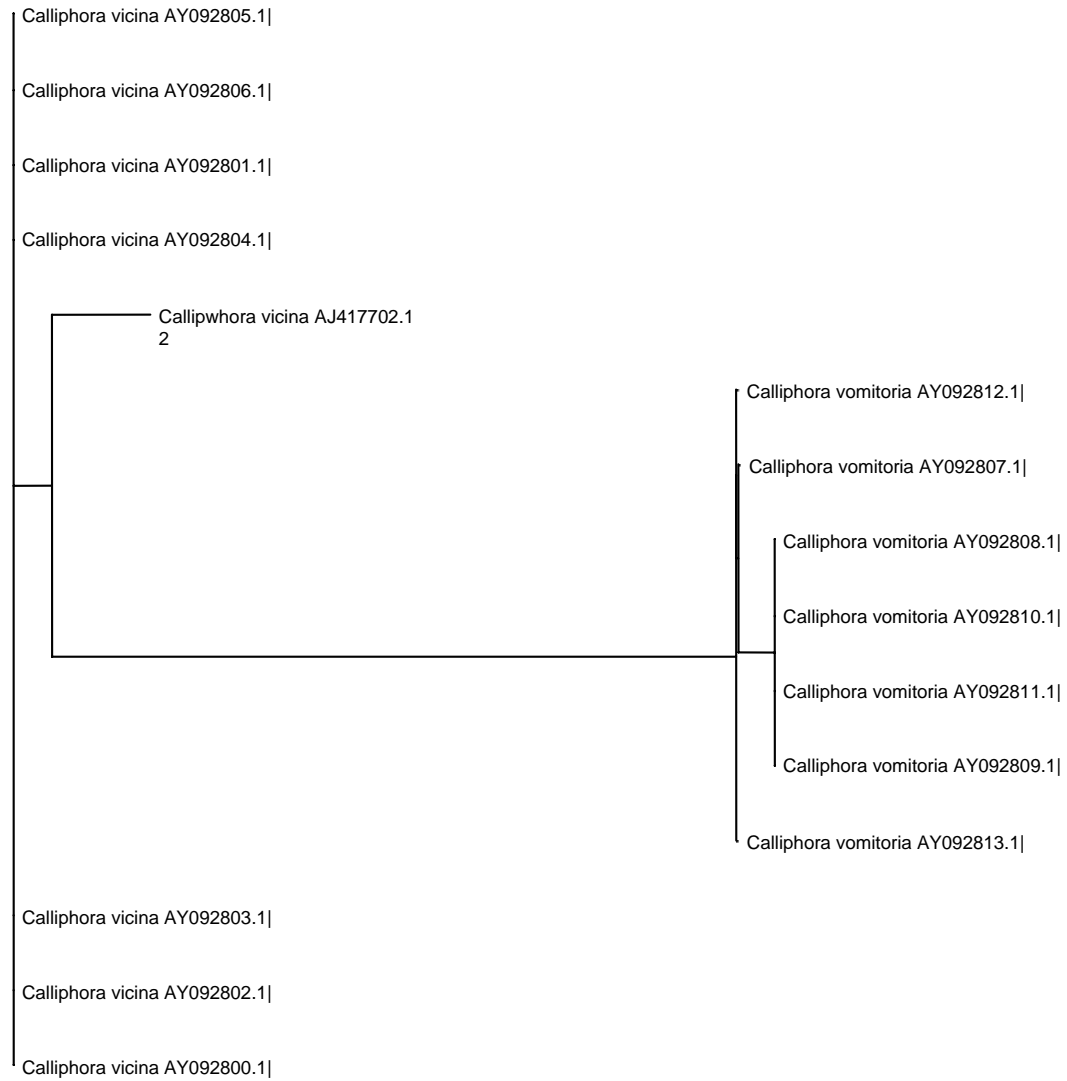


— 0.005 substitutions/site

Bootstrap

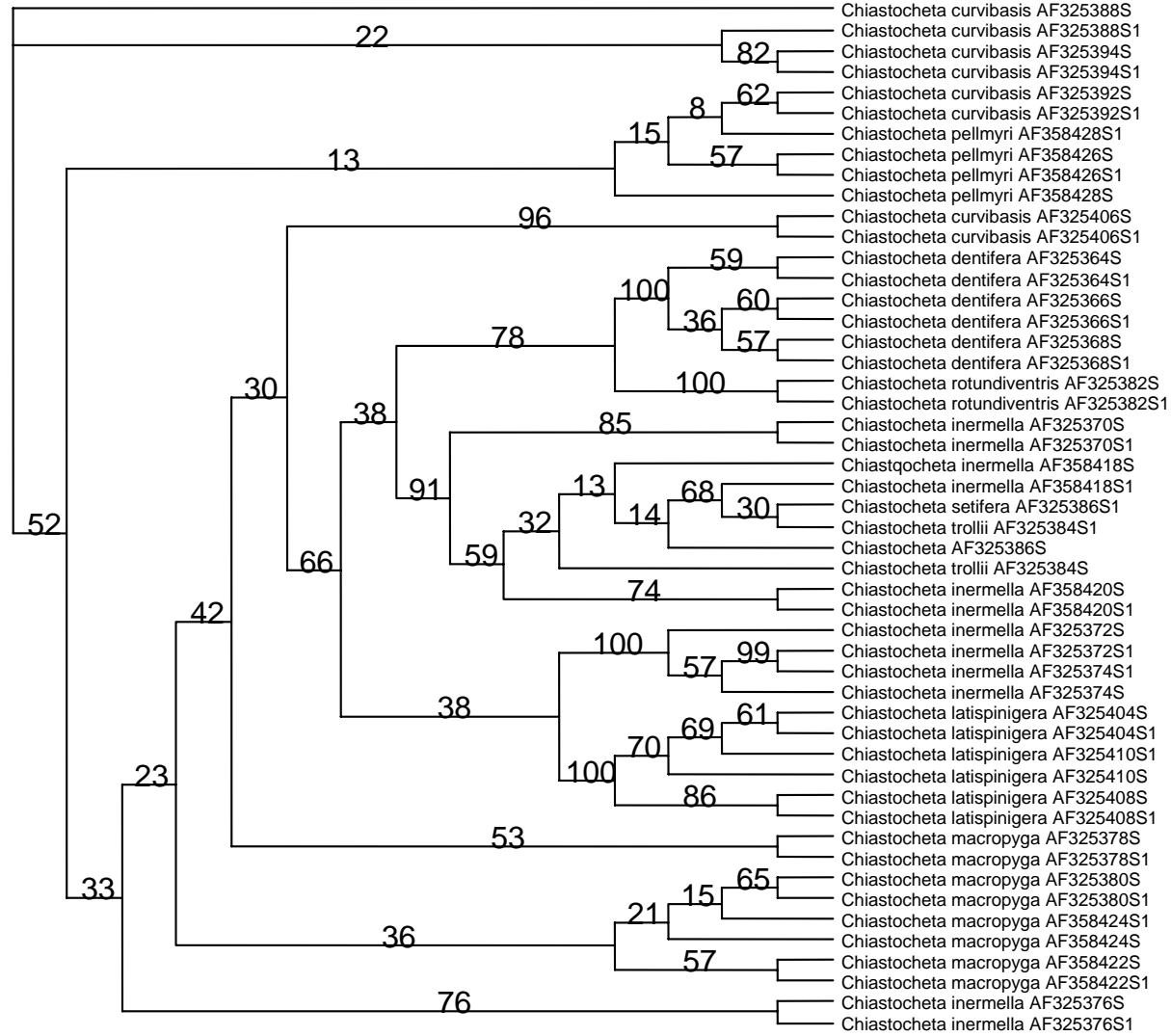


NJ

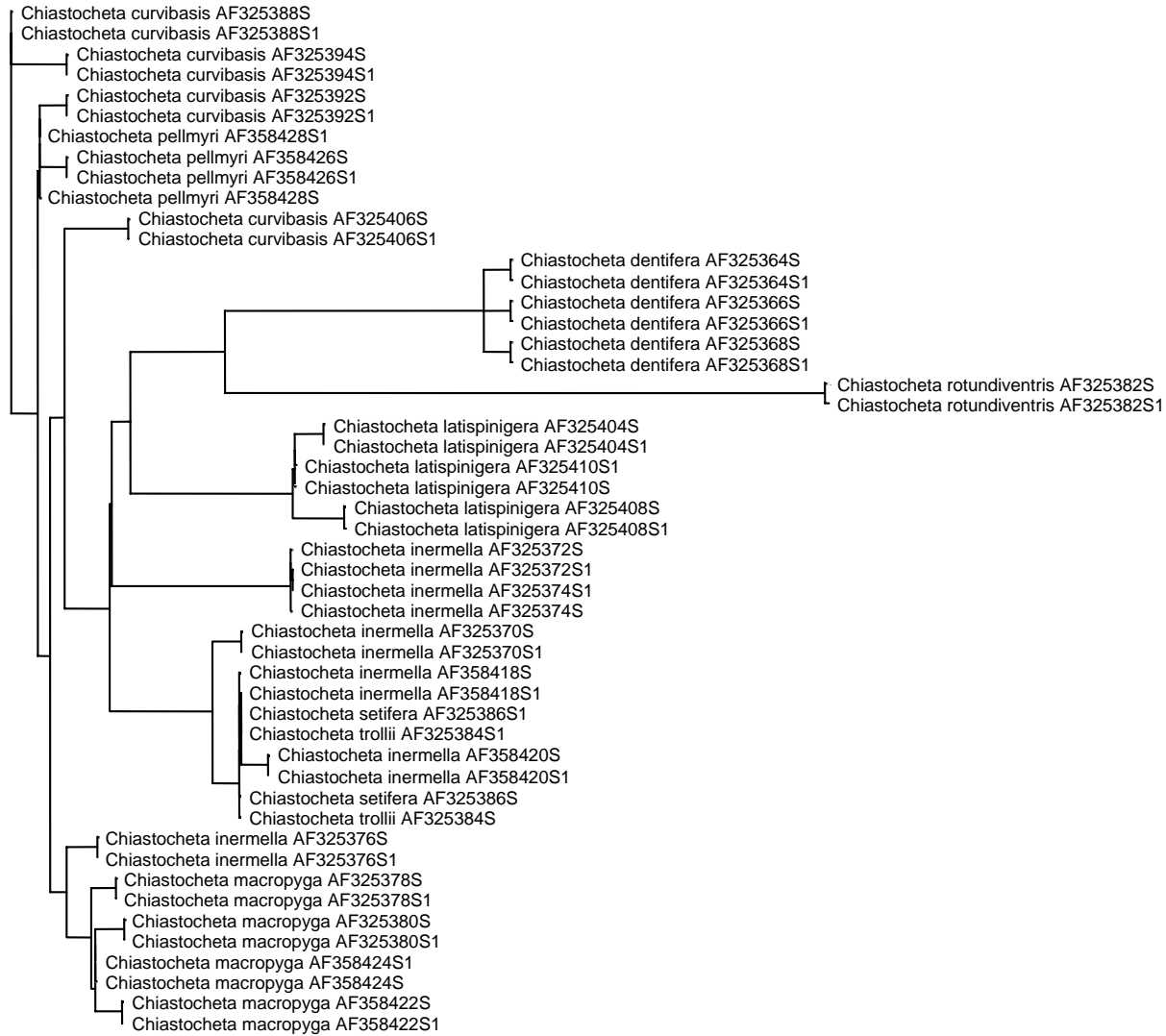


— 0.001 substitutions/site

Bootstrap

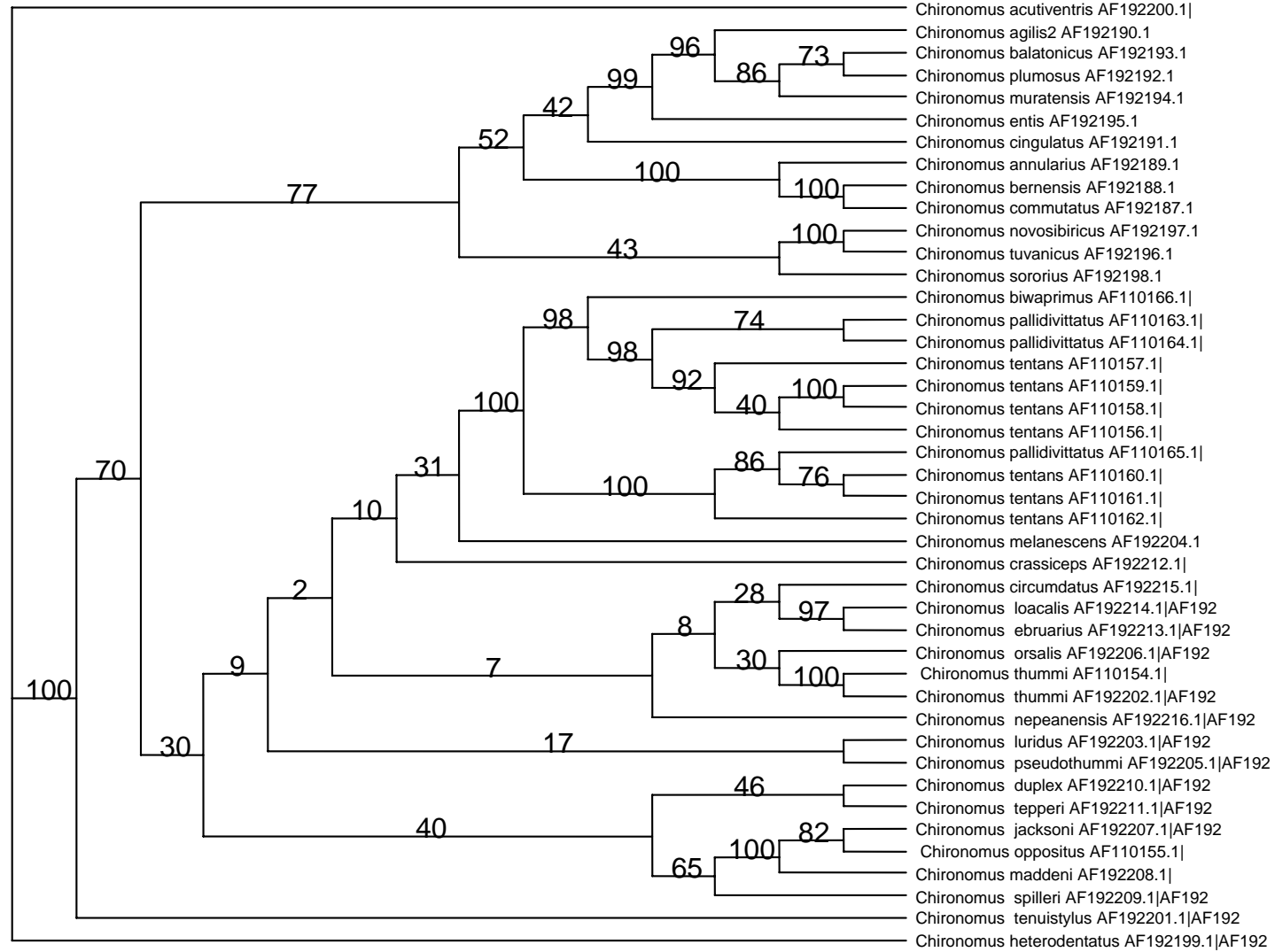


NJ

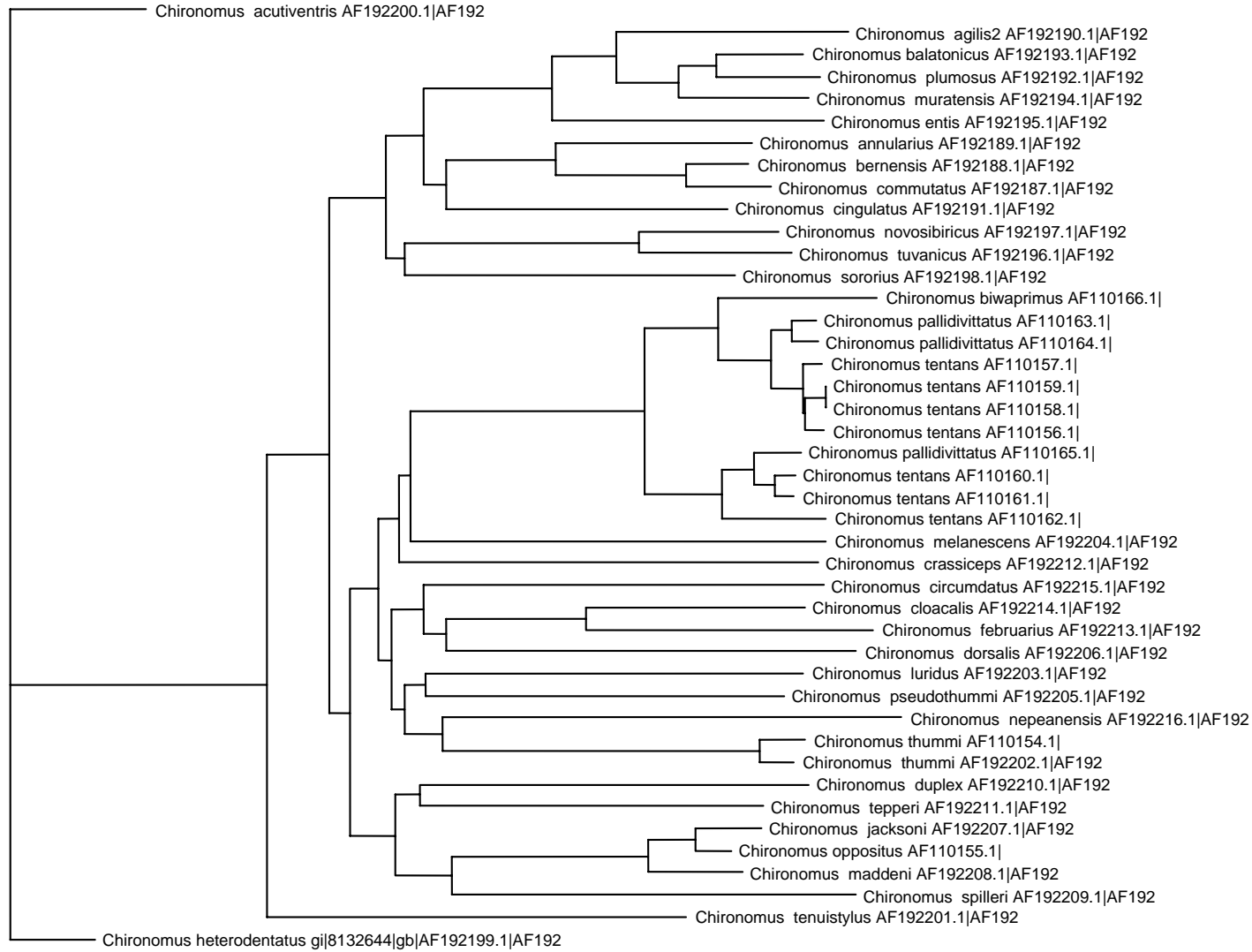


— 0.001 substitutions/site

Bootstrap

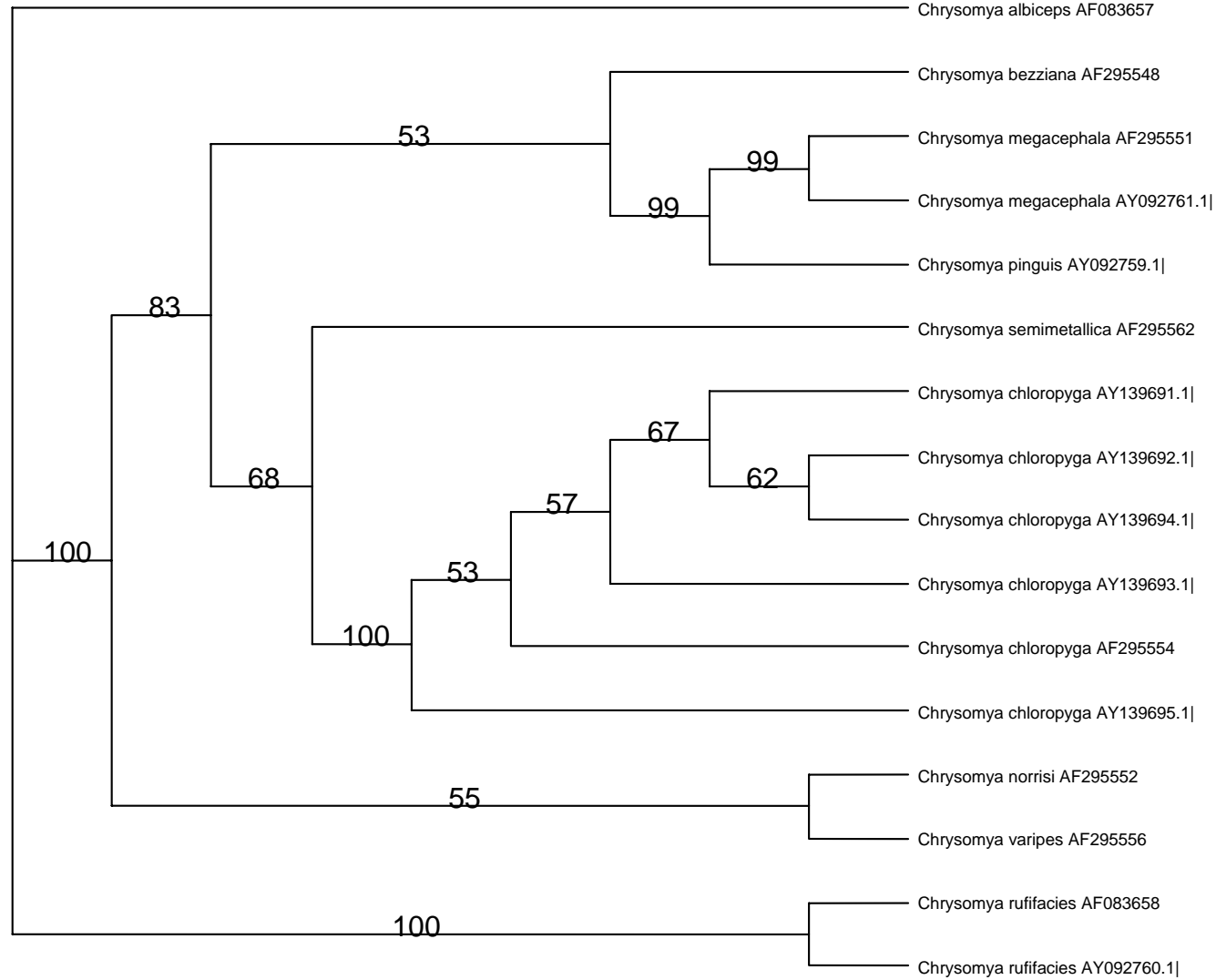


NJ

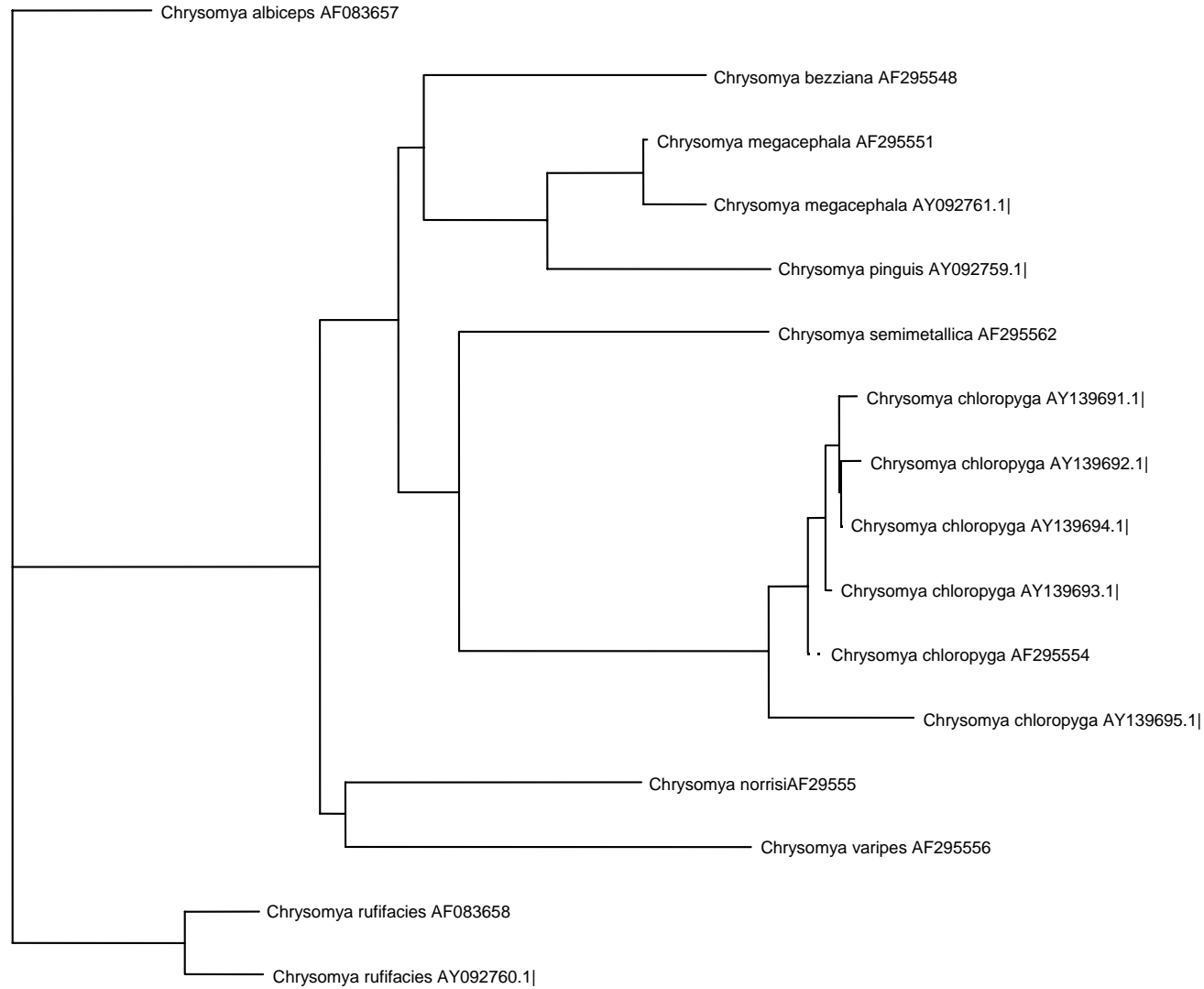


— 0.01 substitutions/site

Bootstrap

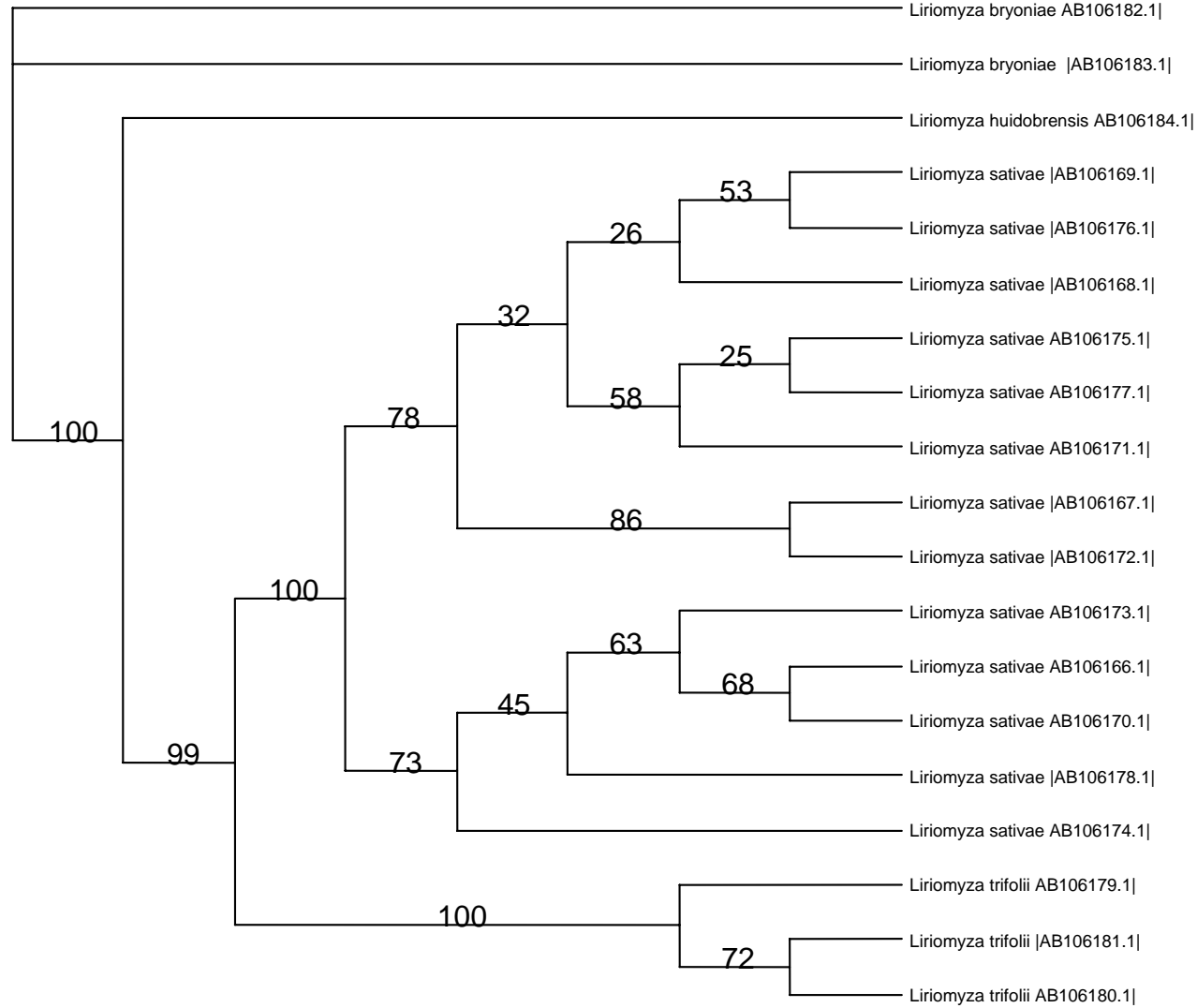


NJ

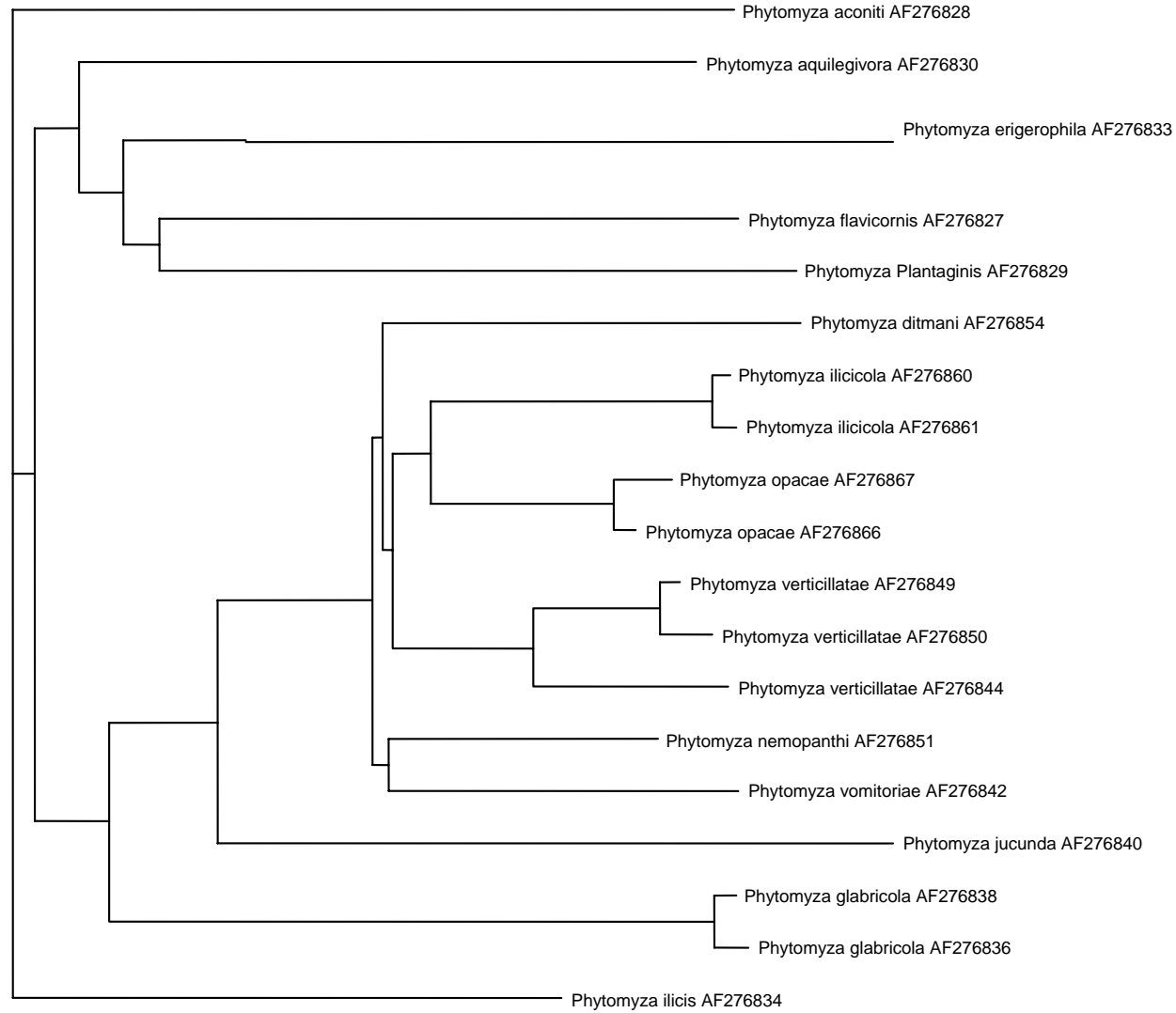


— 0.005 substitutions/site

Bootstrap

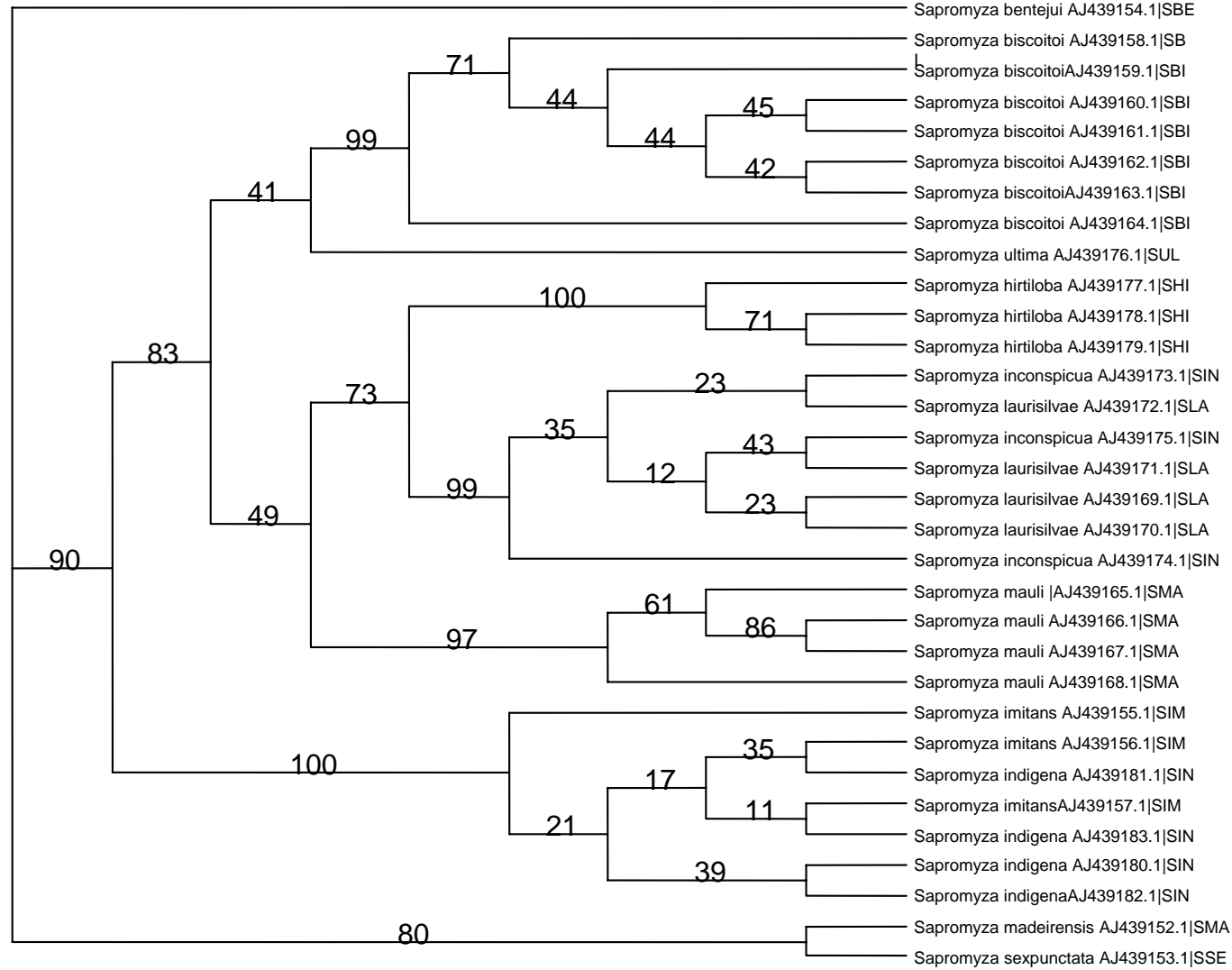


NJ

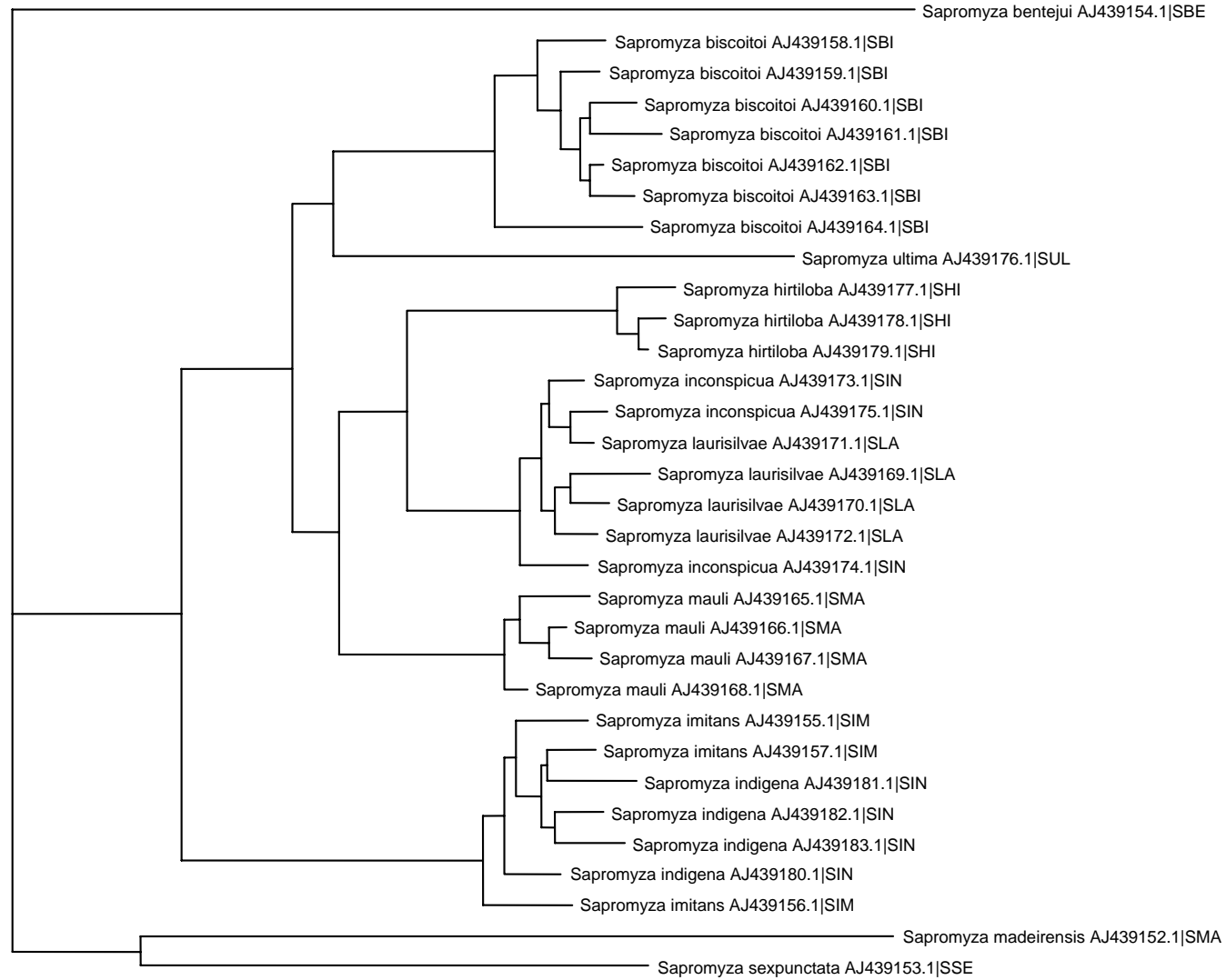


0.01 substitutions/site

Bootstrap

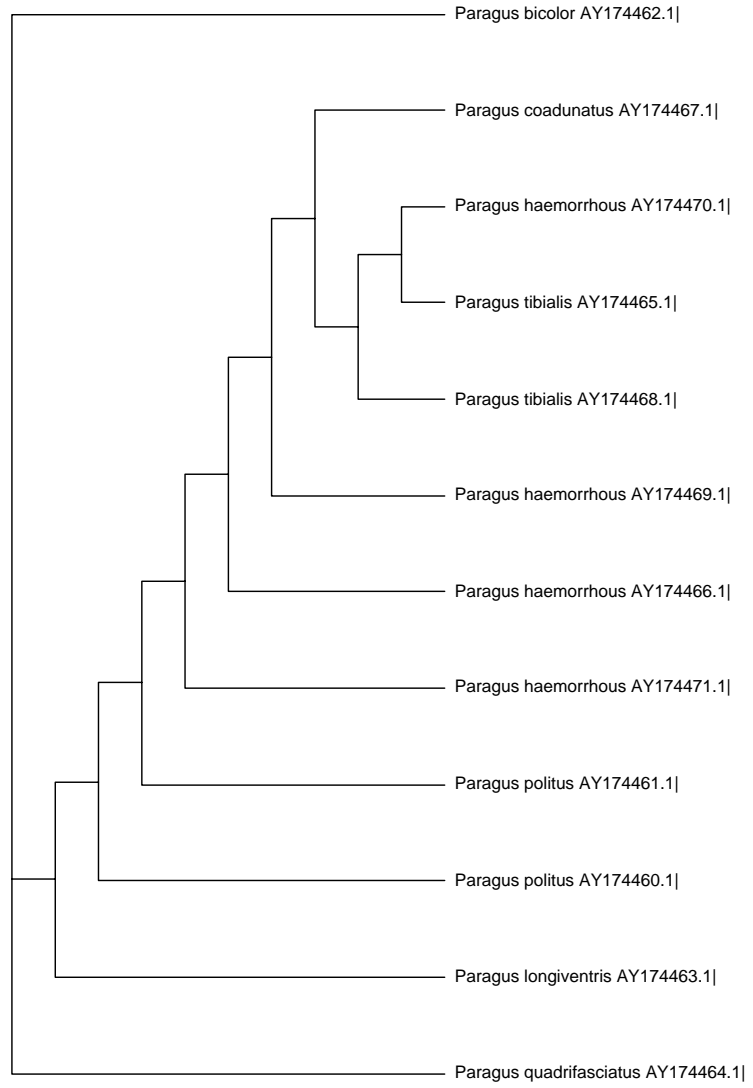


NJ

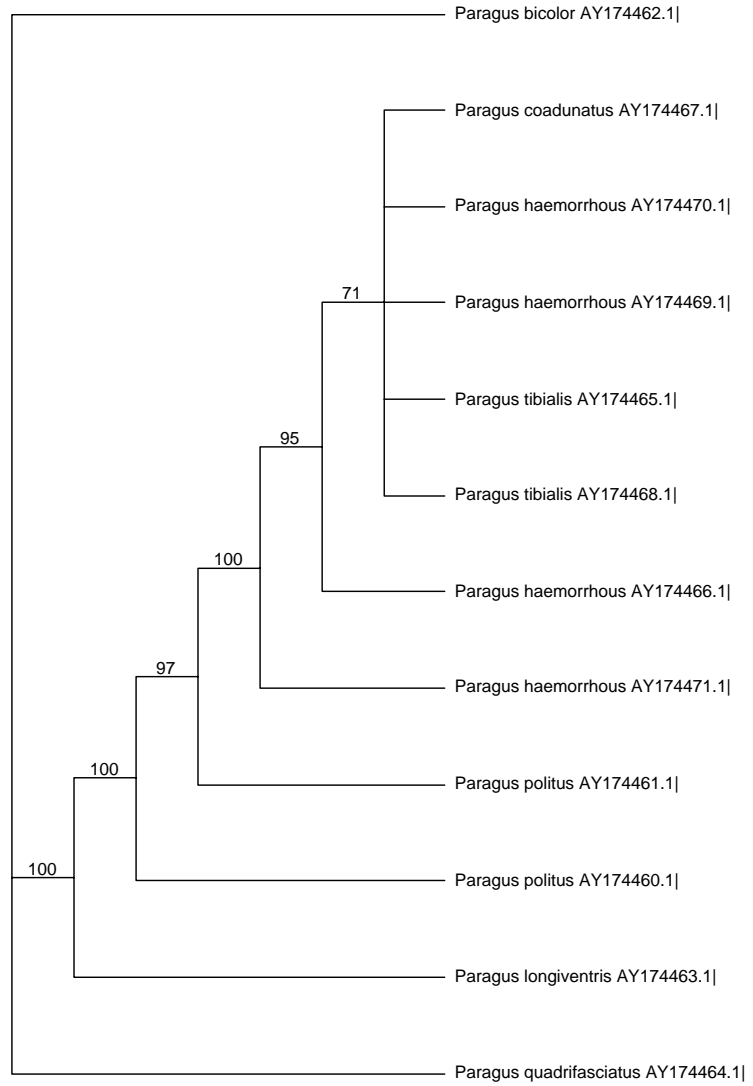


0.01 substitutions/site

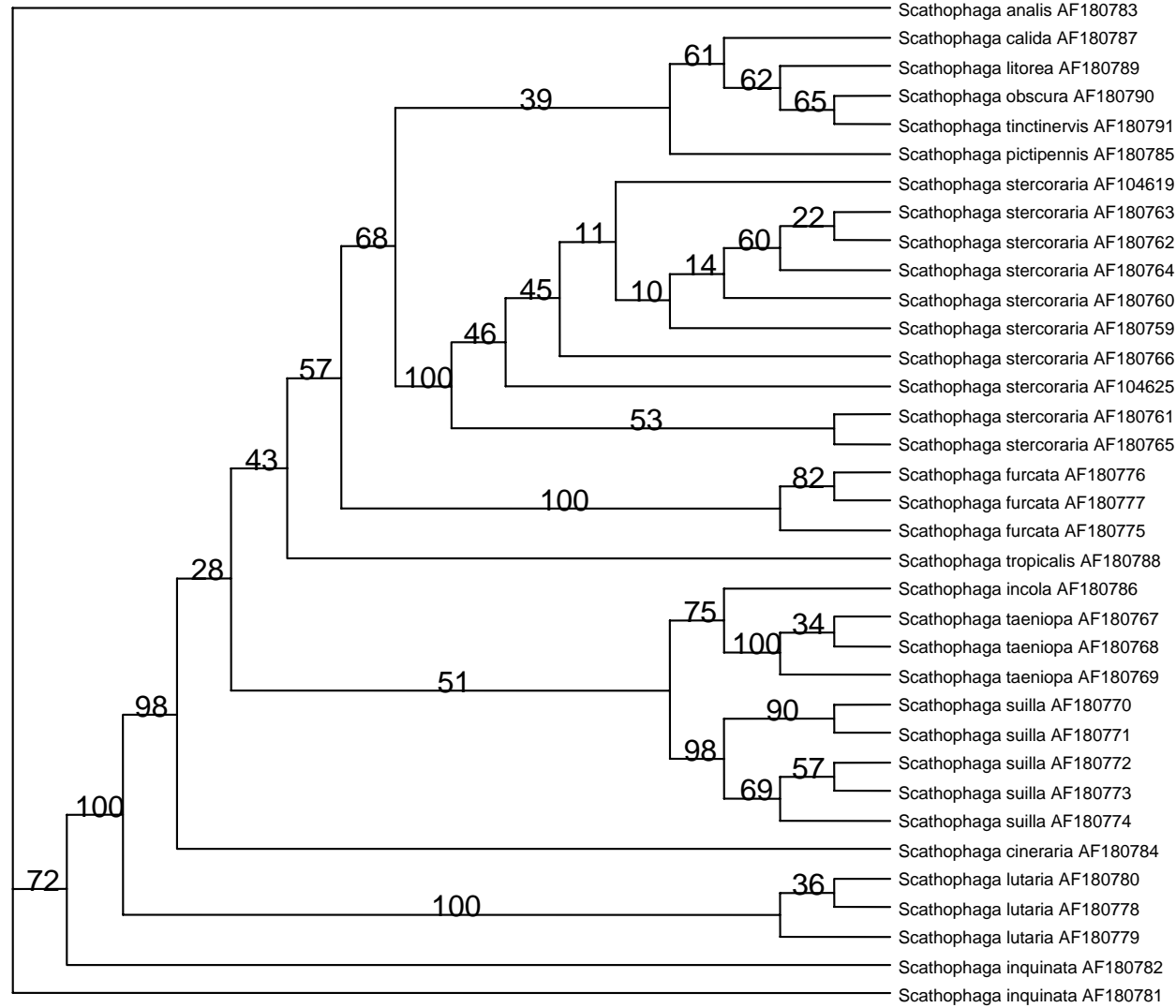
NJ



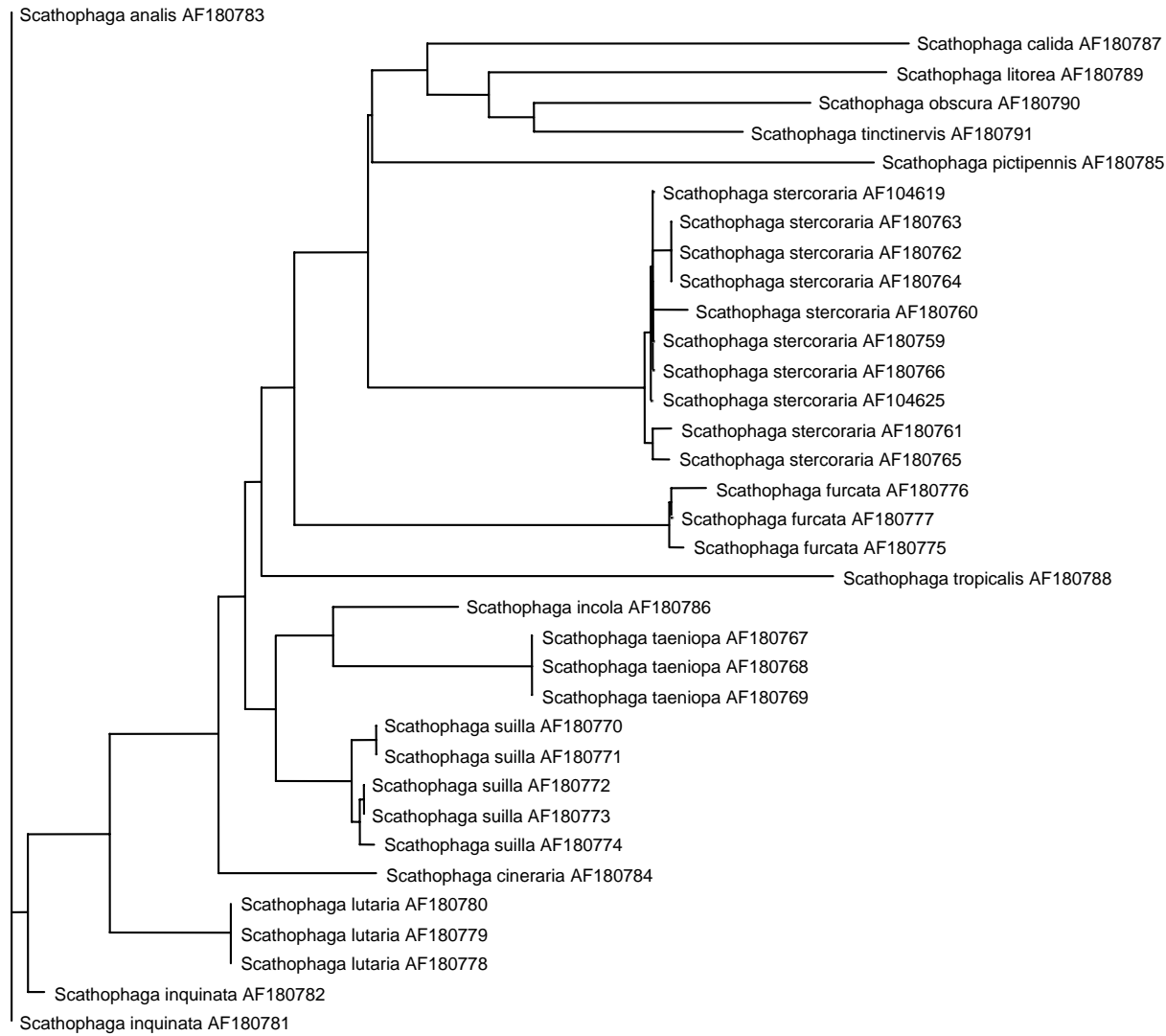
Bootstrap



Bootstrap

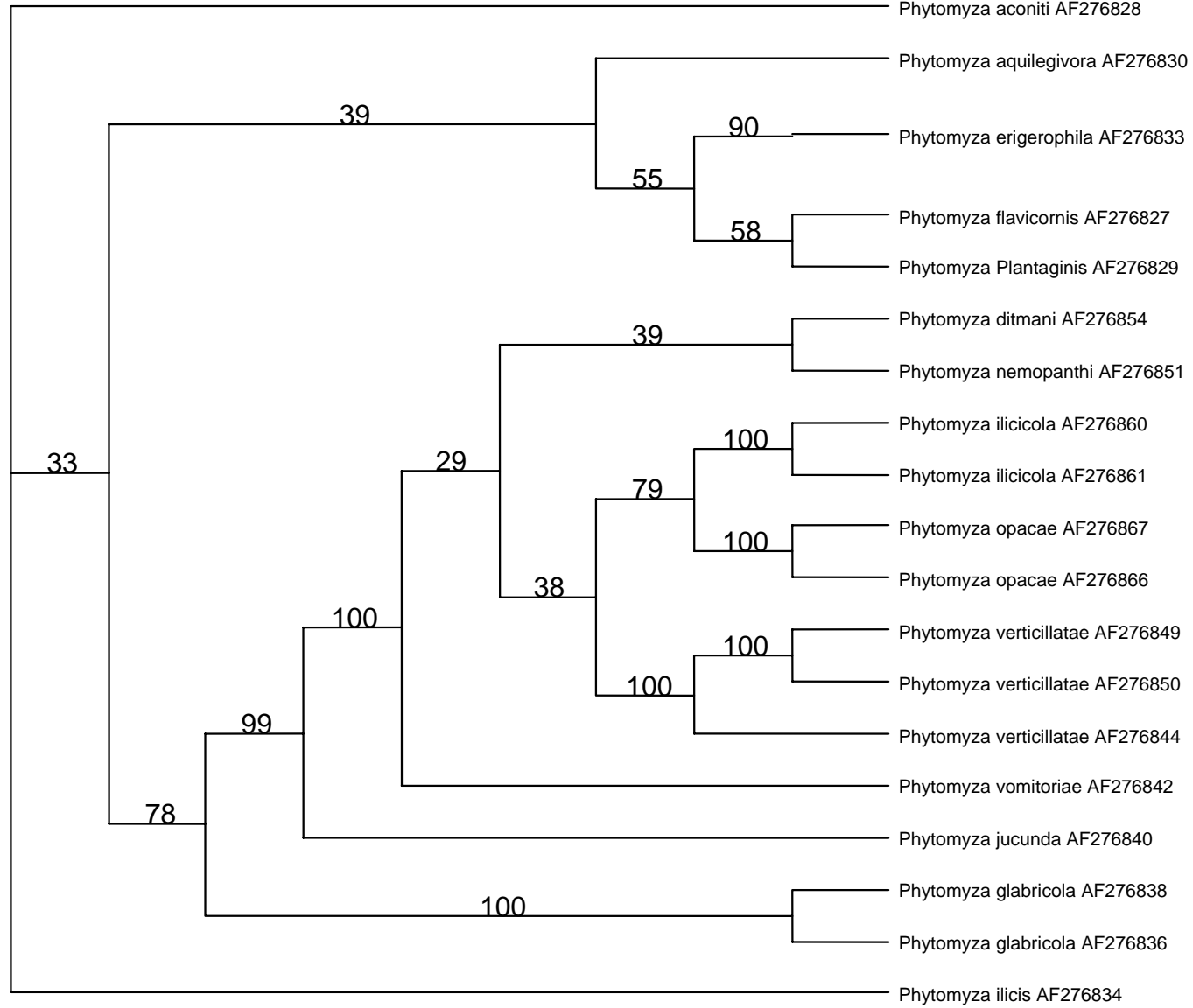


NJ

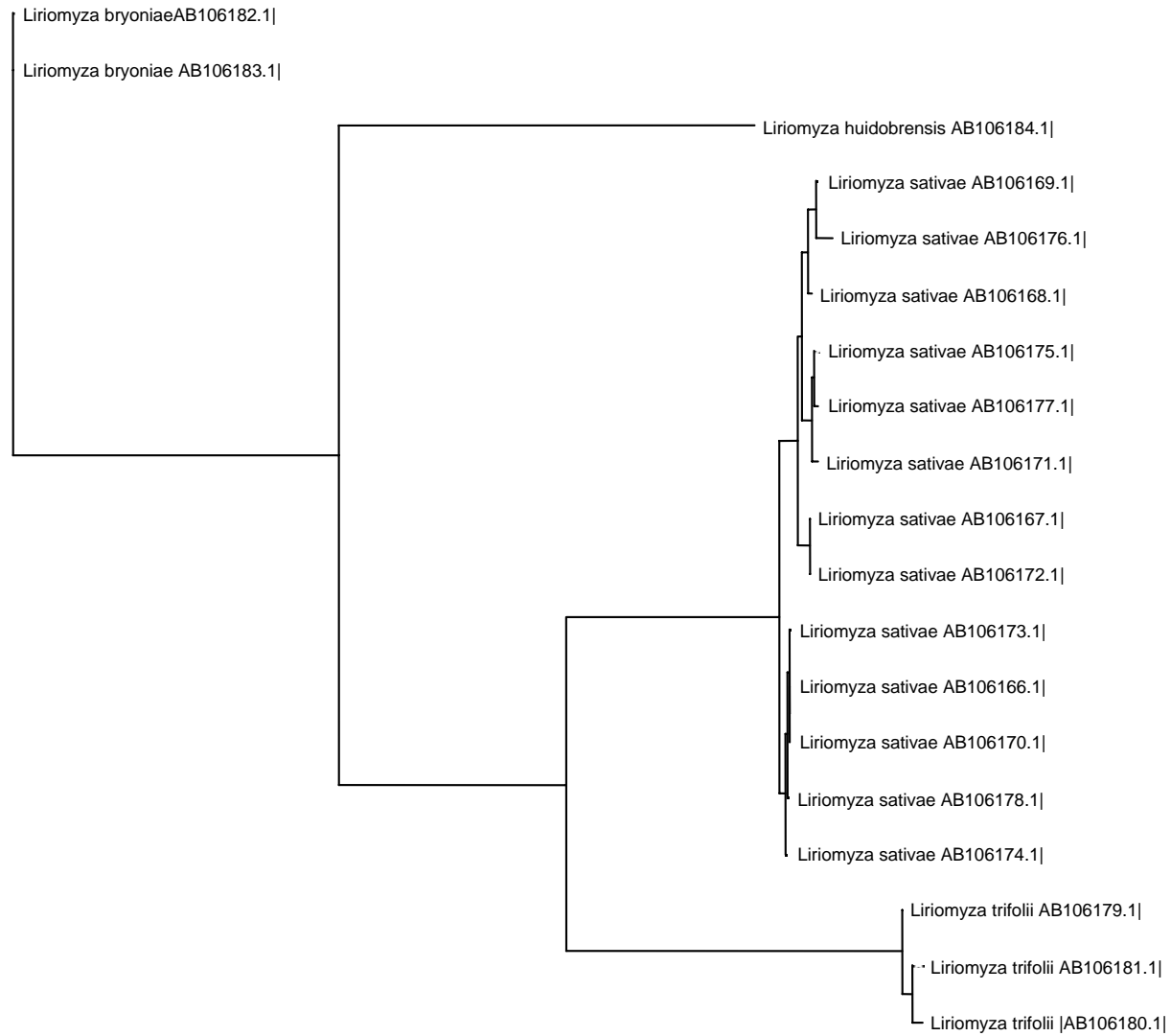


0.005 substitutions/site

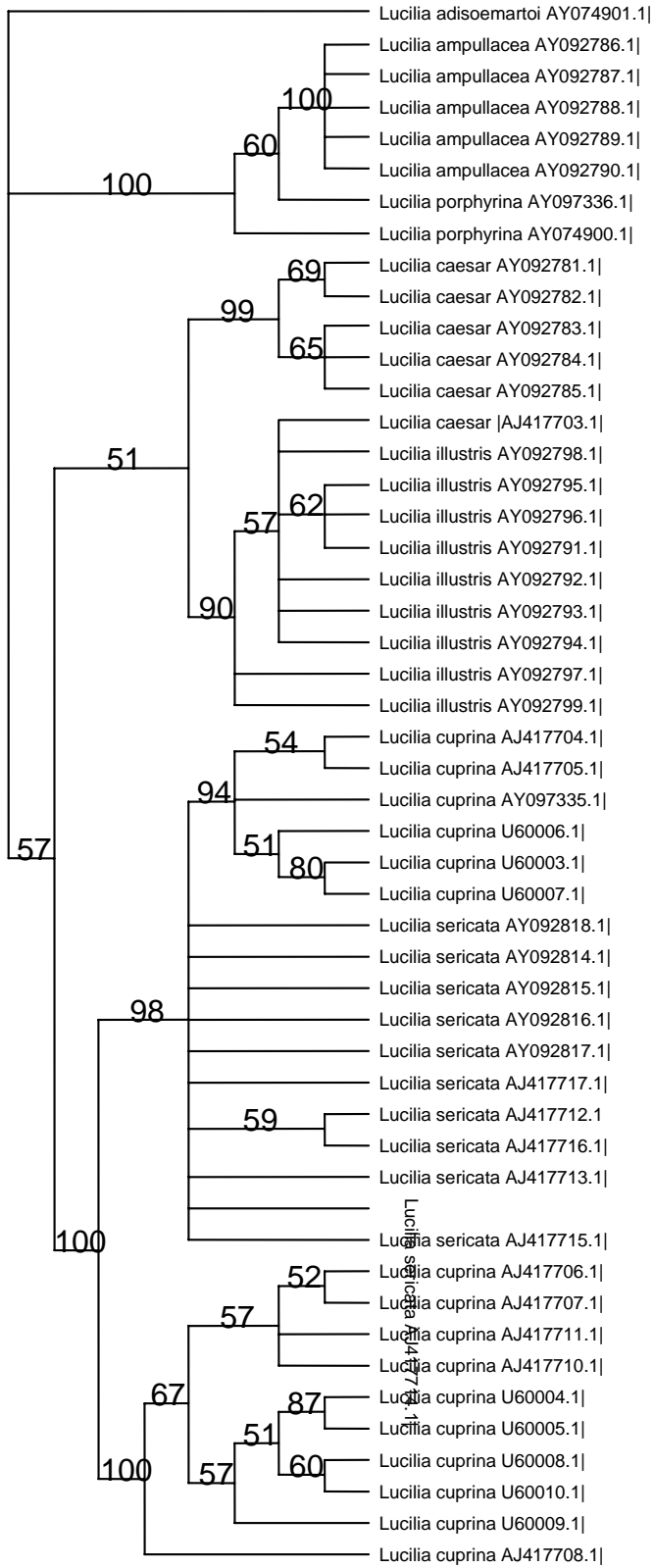
Bootstrap



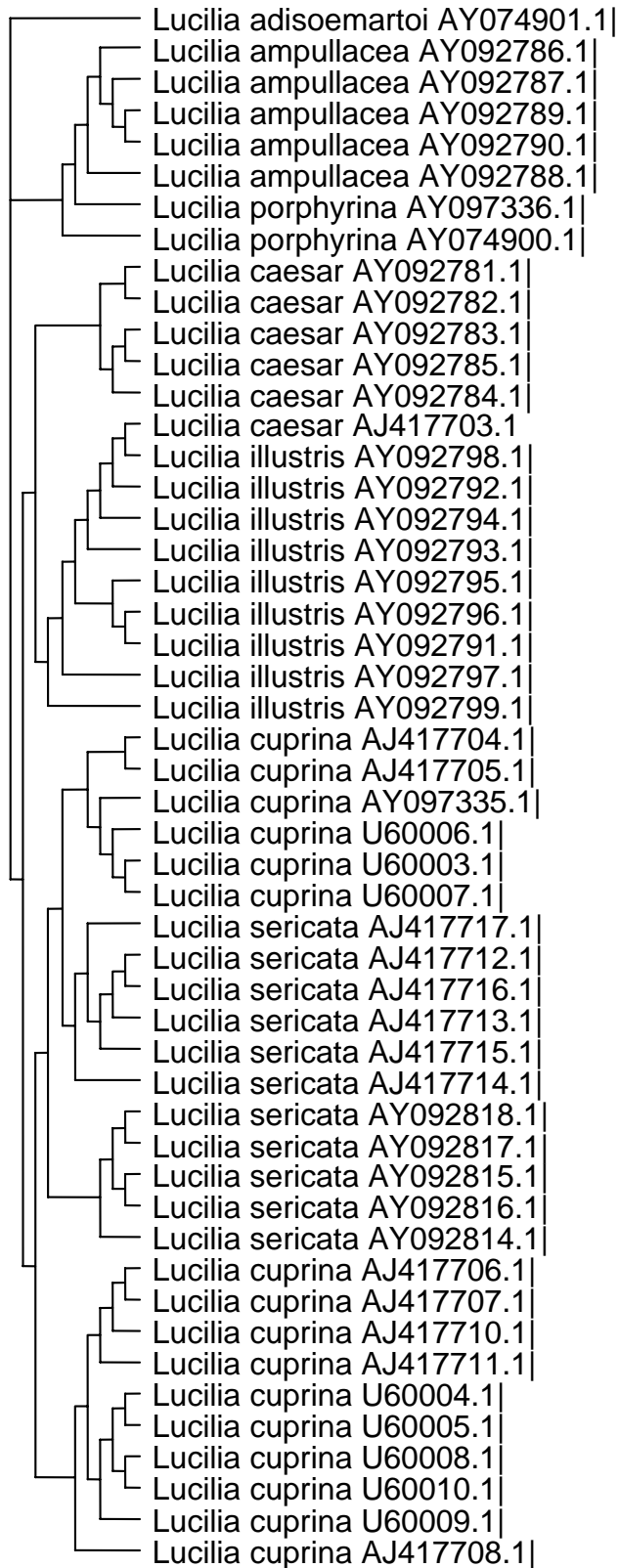
NJ



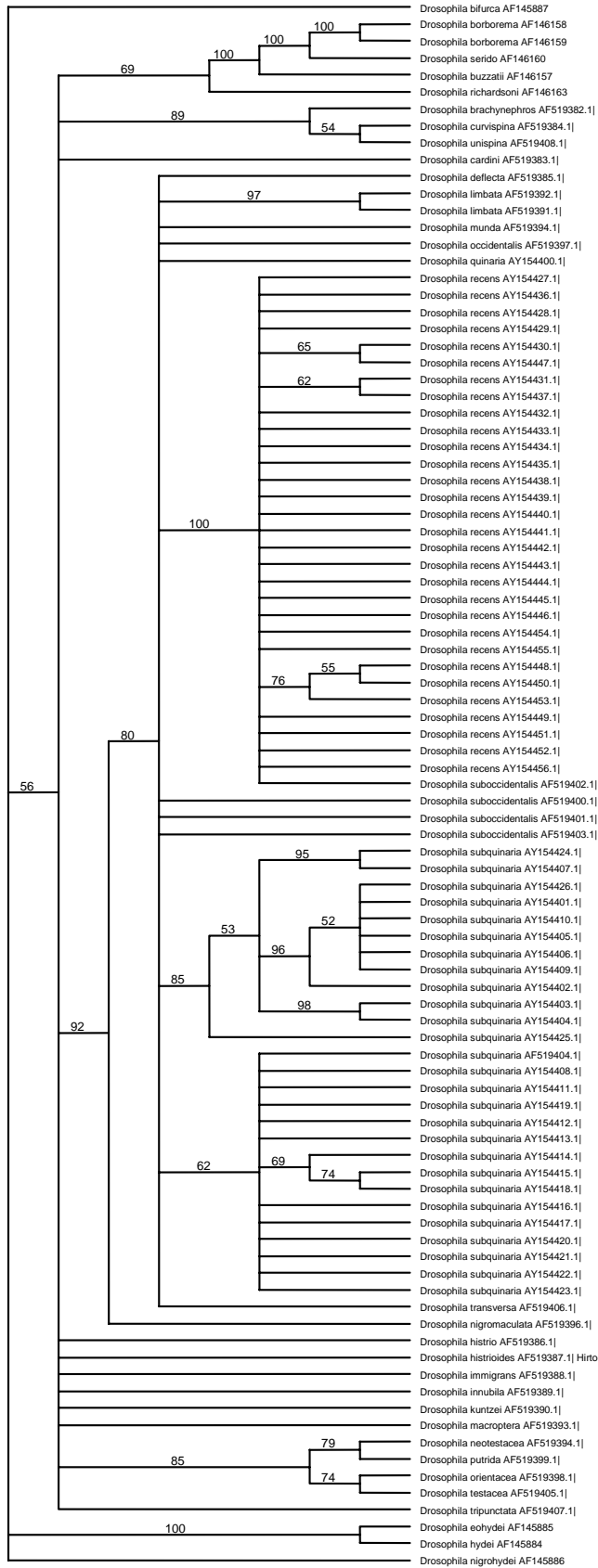
Bootstrap



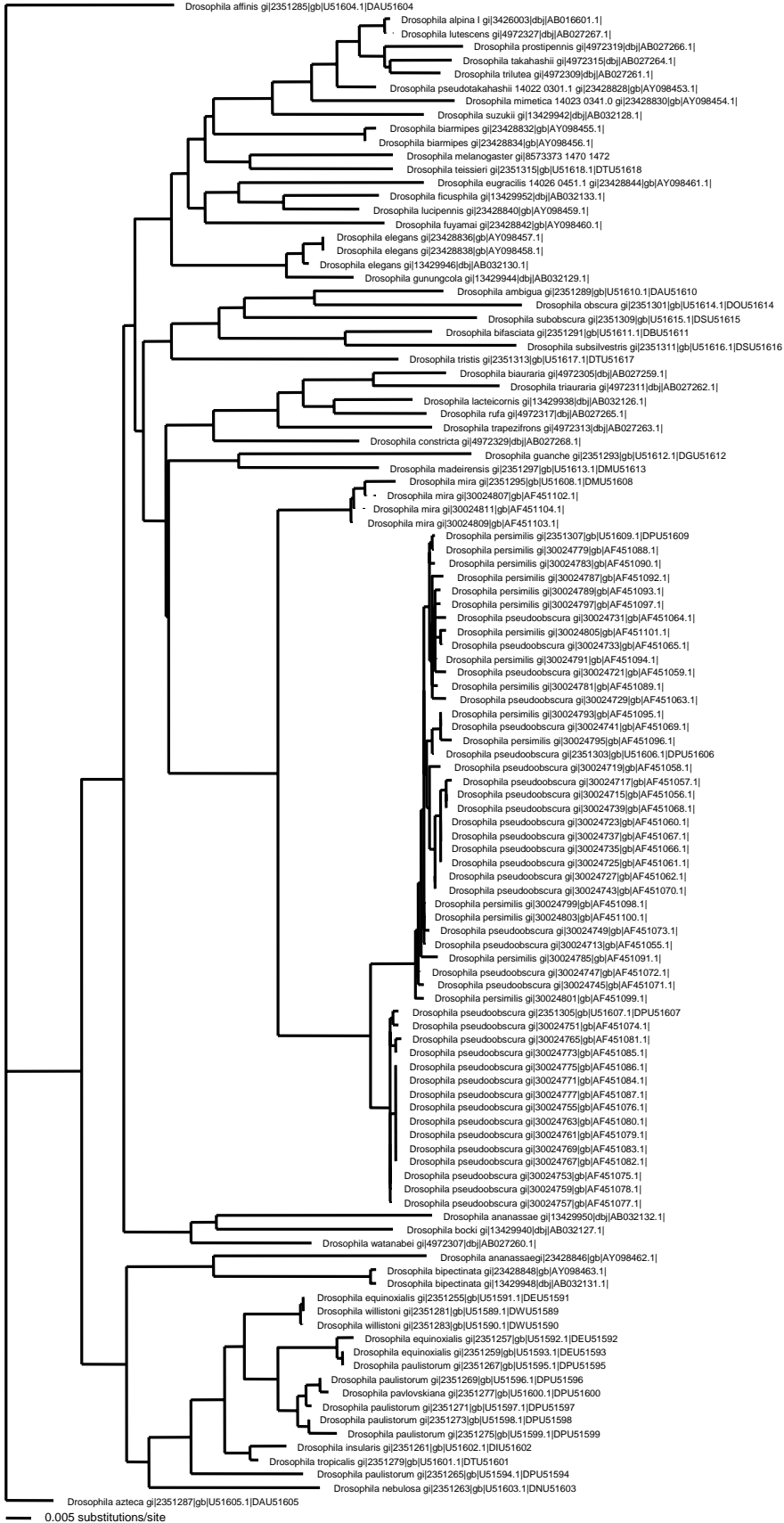
NJ



Bootstrap

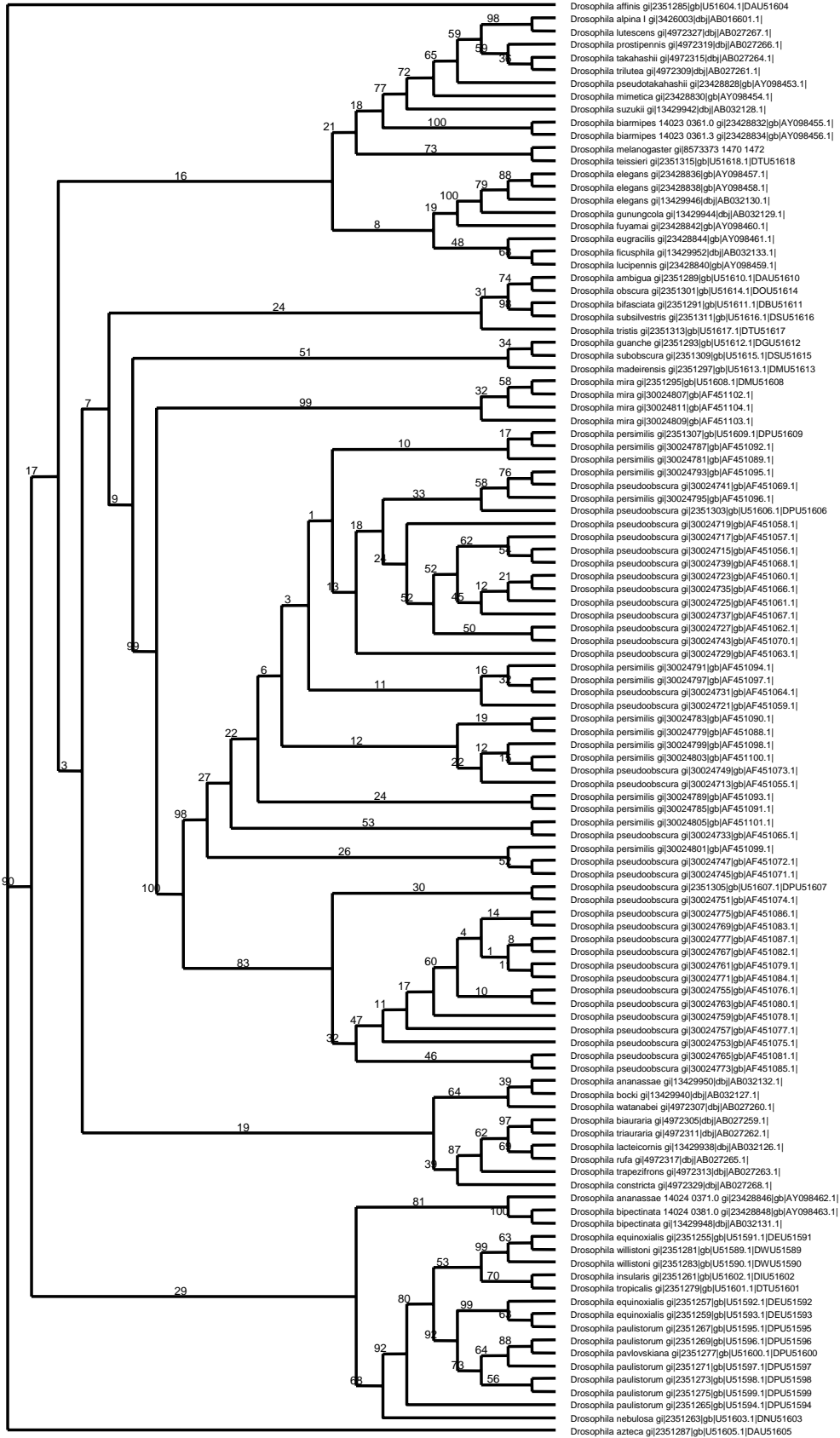


NJ

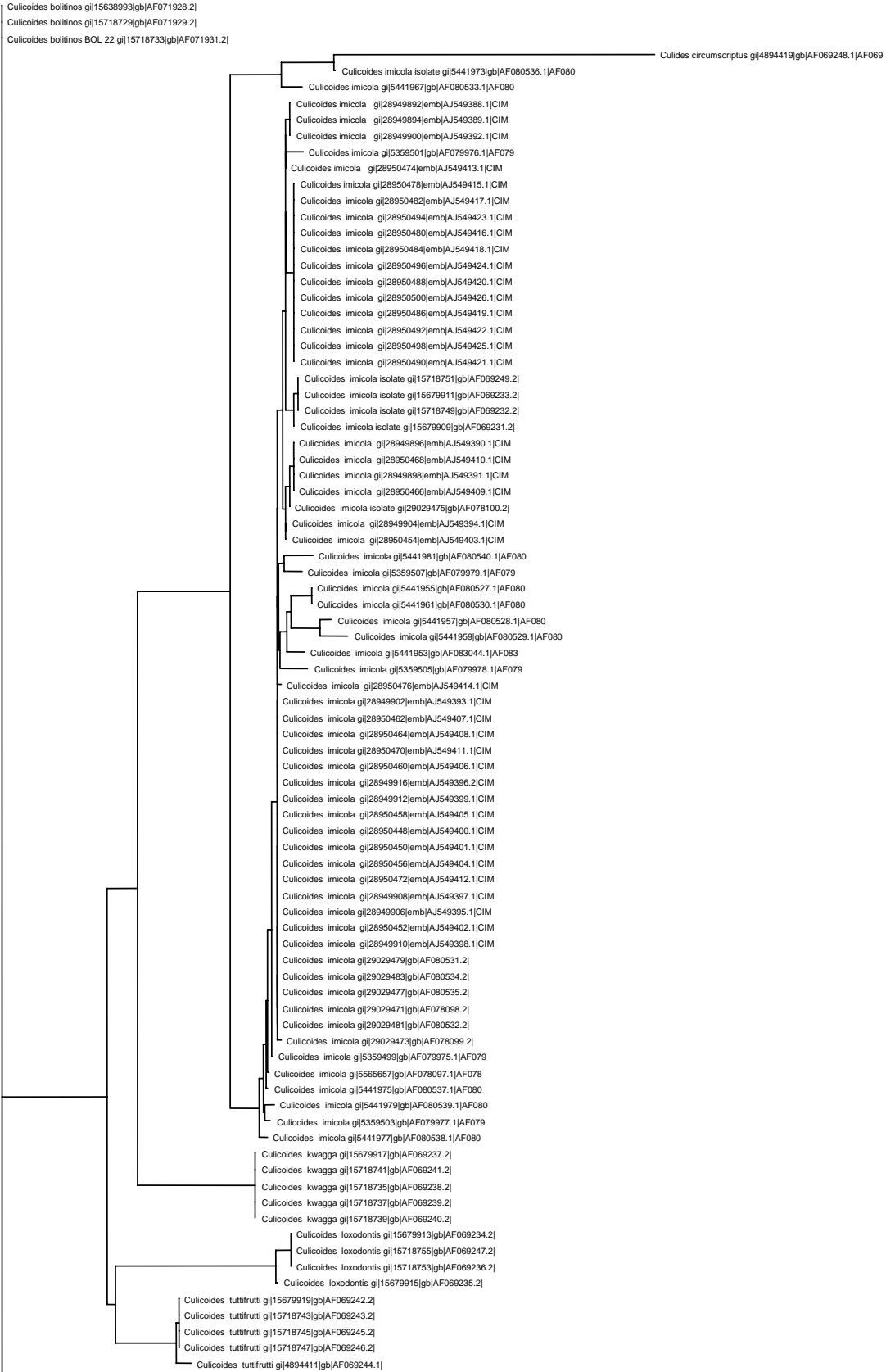


0.005 substitutions/site

Bootstrap



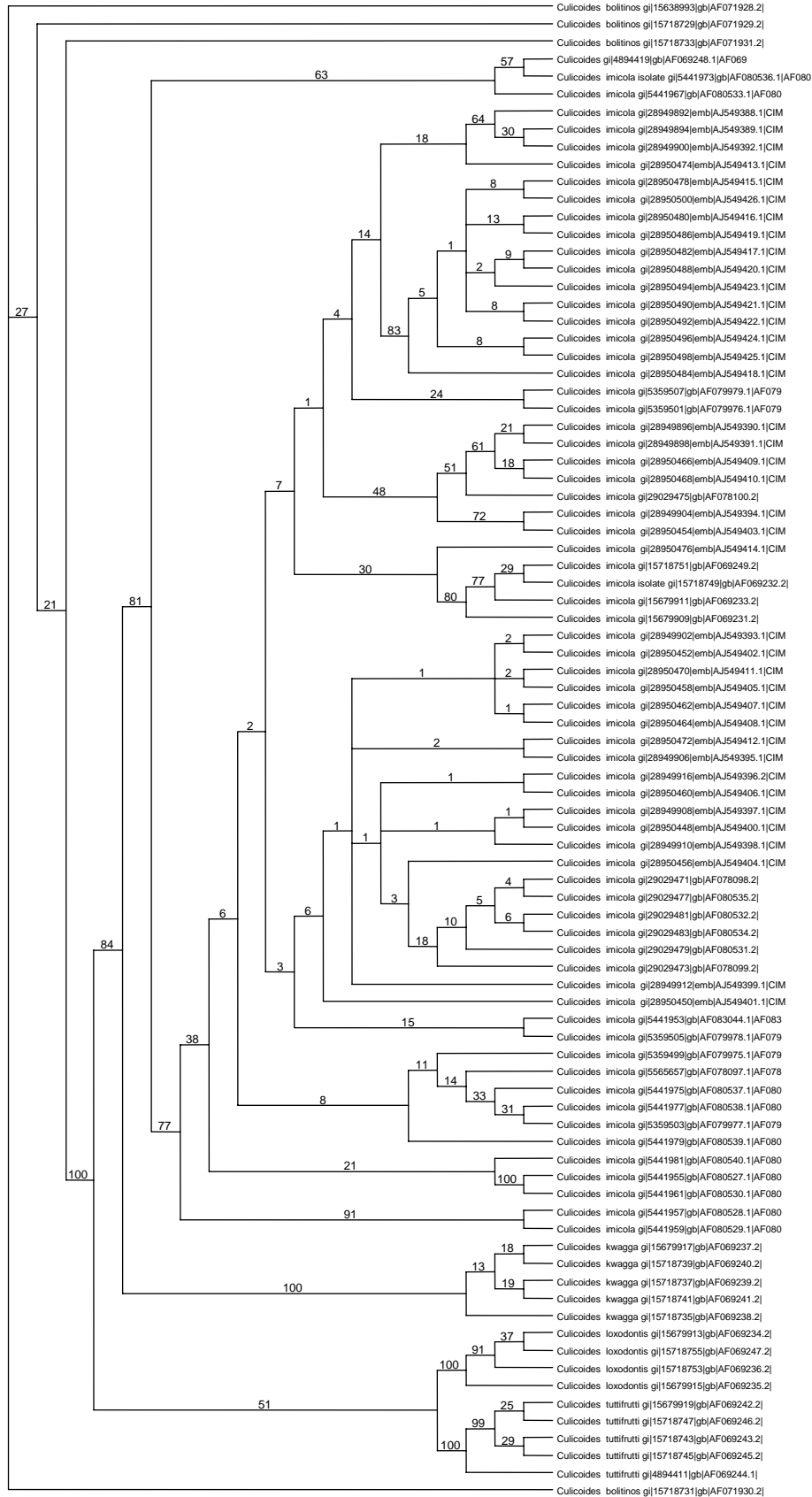
NJ



Culicoides bolitinos gi|15718731|gb|AF071930.2|

— 0.005 substitutions/site

Bootstrap



NJ

Anopheles arabensis-gambiae AF252977.1
Anopheles swambia AF222328.1
Anopheles bwambia AF225238.1



Anopheles gambiae g[8]132887[gb]AF252878.1
- 0.001 substitutions/site