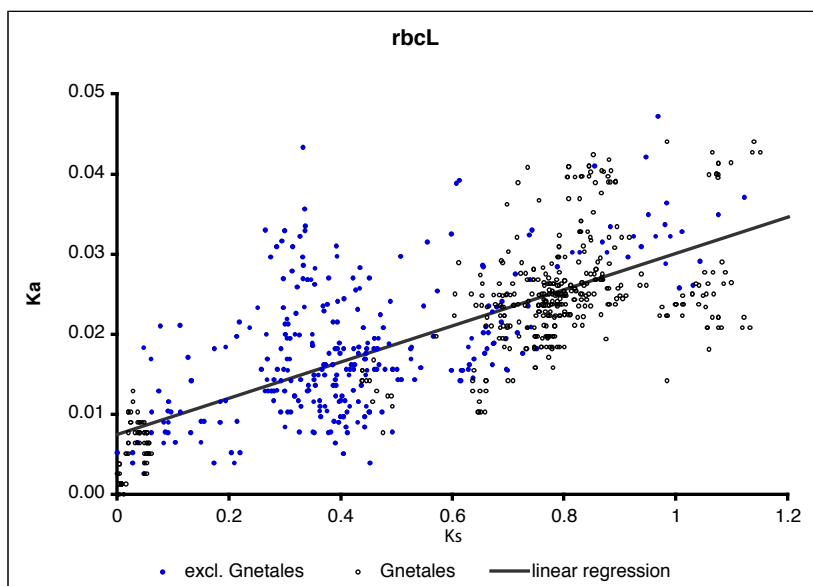
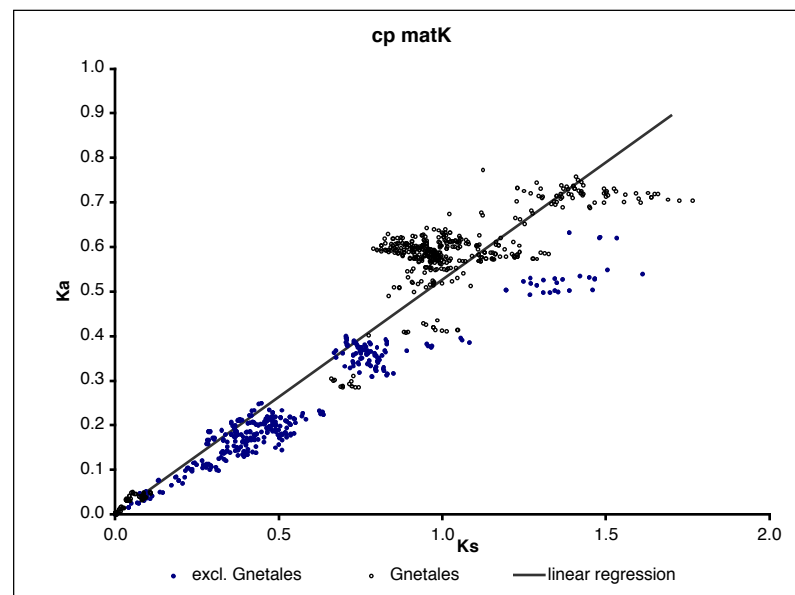


A



B



Supplemental Fig. 4. Synonymous ( $K_s$ ) vs. non-synonymous ( $K_a$ ) substitutions in vascular plant *rbcL* and *matK* plastid gene sequences ( $n=36$ ). Filled circles indicate the values obtained from pair-wise comparisons between non-Gnetales vascular plants and open circles those from comparisons between Gnetales and other vascular plants. (A) For *rbcL* sequences, the slope of the line obtained by least square regression is 0.023 and the coefficient of correlation ( $r$ ) is 0.73. (B) For *matK* sequences, the slope is 0.527 and  $r$  is 0.94. Note the twenty-fold difference in the scales of the Y-axes.